



Rhode Island Resource Conservation & Development Area Council, Inc.

Helping People Help the Land Since 1973

OCTOBER
TREE ID WALKS
SEE PAGE 2

Newsletter of October 2024

Coverts Workshop

SATURDAY, 9 NOVEMBER 2024

Space is limited!
Register today!

**Rhode Island
Coverts**

Rhode Island Coverts Project is an educational program designed to help forest landowners promote the development of critical wildlife habitats using sound forest management practices that can make wildlife healthier, more diverse and abundant.

RI Coverts seeks to help landowners restore early habitat by educating them on proper management techniques, and this helps restore populations of the New England cottontail and the many avian species such as American woodcock, ruffed grouse, eastern towhee, prairie warbler, golden-winged warbler, blue-winged warbler, brown thrasher, and field sparrow, which are native to Rhode Island forests.

WHO SHOULD ATTEND?

Forest landowners and those associated with managing forest properties.

SCITUATE SENIOR CENTER 1314 Chopmist Hill Road, Scituate, Rhode Island

8:00 a.m. to Noon

**BASIC CONCEPTS IN FOREST & WILDLIFE ECOLOGY, AND COMPONENTS OF A
MANAGEMENT PLAN**

— **LUNCH** from Noon to 1:30 p.m. —

1:30 to 4:00 p.m.

A GUIDED FIELD TRIP — Rain or shine. Please dress appropriately!

The Coverts Workshop is IN-PERSON only.

You MUST REGISTER for this workshop prior to the event.

A \$10 REGISTRATION FEE COVERS ALL MATERIALS AND LUNCH.

For more information and to REGISTER

Contact Paul Dolan 401-500-0399 or rircd2283@gmail.com

*The RIRC&D
Area Council, Inc.*



"HELPING PEOPLE HELP THE LAND SINCE 1973"

Coverts is a project of Rhode Island Resource Conservation & Development Area Council, Inc. supported by, and in collaboration with the USDA Natural Resource Conservation Service.
— RI RC&D and NRCS are Equal Opportunity Employers —



∞ OCTOBER ∞

TREE ID WALK

With Paul Dolan
Retired Deputy State Forester and RI RC&D Area Director

Canonchet Farm

South County Museum
111 Strathmore Road, Narragansett, Rhode Island 02882

SATURDAY, OCTOBER 19 FROM 10:00 A.M. TO NOON

RAIN DATE: OCTOBER 26



[Reserve Your Free Spot](#)



Join us for a fun and educational event all about **tree identification**!

First, we'll watch a slide show to get ready to learn how to distinguish one tree from another and discover interesting facts about different tree species.

Then we'll go outside at the **South County Museum**, to explore the beautiful grounds and put your newfound knowledge to the test. Whether you're a nature enthusiast or just curious about the world around you, this event is perfect for anyone interested in trees and the environment. Don't miss out on this exciting opportunity to deepen your understanding of the natural world!

Early arrivals will get a free copy of the Arbor Day Foundation's booklet "What Tree Is That?"



TREE ID SLIDE SHOW AND WALK

With Paul Dolan
Retired Deputy State Forester and RI RC&D Area Director

FRIDAY, OCTOBER 25 FROM 1:00 PM TO 3:00 PM
North Scituate Public Library, 606 West Greenville Road, Rhode Island 02857

[Click here to REGISTER](#)

∞ NOVEMBER ∞

RHODE ISLAND CONSERVATION DISTRICTS
RI FOREST CONSERVATORS ORGANIZATION
RI RESOURCE CONSERVATION & DEVELOPMENT COUNCIL
RI ENVIROTHON
RI TREE FARM

JOINT CONSERVATION

— ANNUAL —
DINNER —

SATURDAY

FREE
WINE!

NOV
2ND

SILENT
AUCTION!

6:00-8:30PM

GREENVALE VINEYARDS
582 WAPPING RD,
PORTSMOUTH, RI 02871

Farm2Table by local farm, *Gnarly Vines Farms*

Gluten Free and Vegan Options Available!

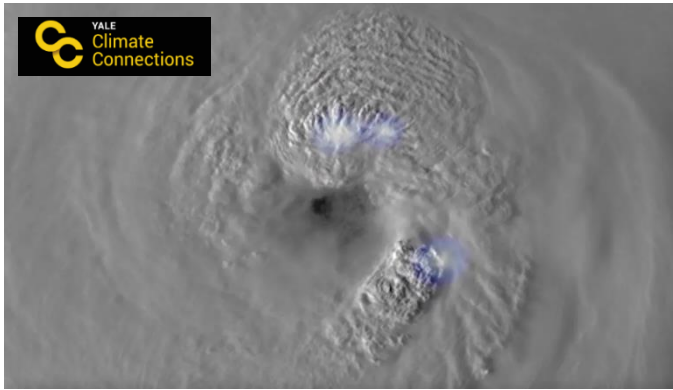
\$45.00 Per Person

Reserve Online at
easternriconservation.org by
October 17th

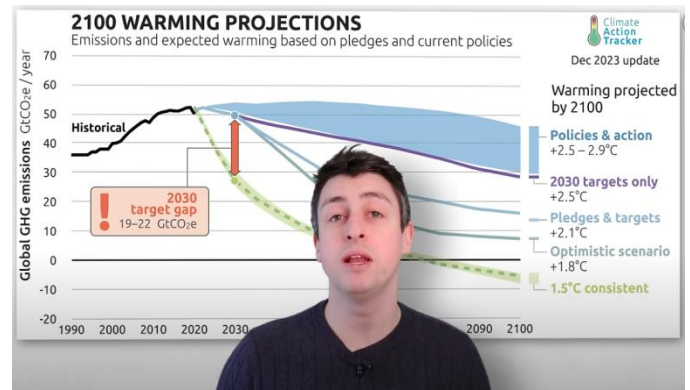
For questions call (401)934-0842

To Reserve Your Tickets
CLICK HERE

[Climate Change and Hurricane Helene](#)



[Is there any good news about climate change?](#)



Traveling Trees:
[Assisted Migration for Climate Resilience](#)



[Recalibrate Migrations with a “Taxi Ride”](#)



[The Answer to Throw-Away Plastic Bags?](#)



Coffee grounds are good for— what?

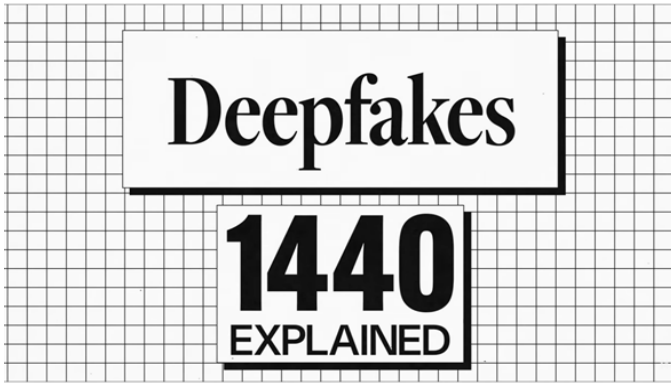
[Clean Up Agricultural Bentozone](#)



[Make concrete Stronger](#)



RESHAPING OUR PERCEPTIONS OF REALITY



THE FUTURE OF AI WITH MO GAWDAT



POWERING MICROSOFT'S AI



WHAT WILL IT TAKE TO REOPEN 3MI ?



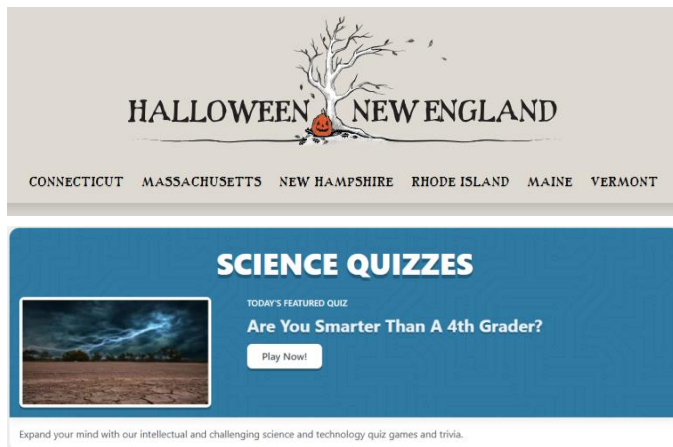
THE FOREST'S CREEPIEST FUNGUS



DEADLY RACCOON VIRUS IN CA



Looking for Something to Do?



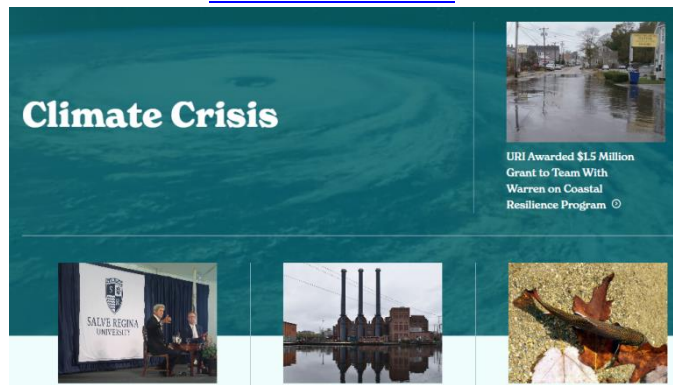
HISTORIC HOUSES OR HISTORIC TREES?



MUSIC WORKS OPENS



CLIMATE CRISIS RI



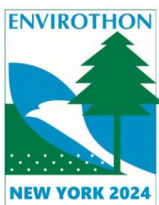
GREEN OASIS GROWS FROM INDUSTRIAL DESERT



RHODE ISLAND Envirothon

Developing Environmentally Aware Leaders of

Rhode Island Envirothon is an exciting environmental program, perfect for middle and high school students who love the outdoors, animals, and plants, or who are just curious about the world we live in. Throughout the year, Envirothon students attend hands-on workshops that inspire learning about our natural environment, and instills in them an appreciation of nature and the delicate environmental balances that make life possible. After studying with experts on all aspects of the environment, the program culminates in a competition held each May to determine who will represent the state at the International competition..



Envirothon is not just an educational program. The environmental appreciation and team-building skills the students learn are real-world experiences that they will carry throughout their lives as they become the leaders of tomorrow because Envirothon is teaching them HOW to think, not WHAT to think.

FOR MORE INFORMATION ABOUT ENVIROTHON CONTACT

Paul Dolan

Call 401-500-0399

Email president@rienvirothon.org

VISIT THE RI
ENVIROTHON
[WEBSITE](#)

WATCH THE
[ENVIROTHON VIDEO](#)



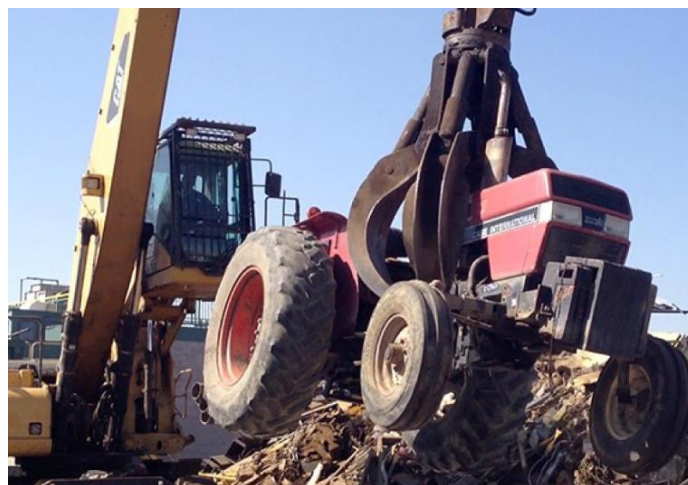
Natural Resources Conservation Service

U.S. DEPARTMENT OF AGRICULTURE

Funding Available to Help Rhode Island Farmers Replace Diesel Tractors and Other Farm Equipment with Low Emitting or Electric Equipment —

In 2024 alone, USDA is making more than \$3 billion available nationally through Biden's Inflation Reduction Act for climate-smart mitigation activities, in addition to the over \$2 billion available through the Farm Bill. This extensive funding will be used to meet demand for oversubscribed conservation programs, maximize climate benefits and to help farmers and forest landowners address their natural resource challenges.

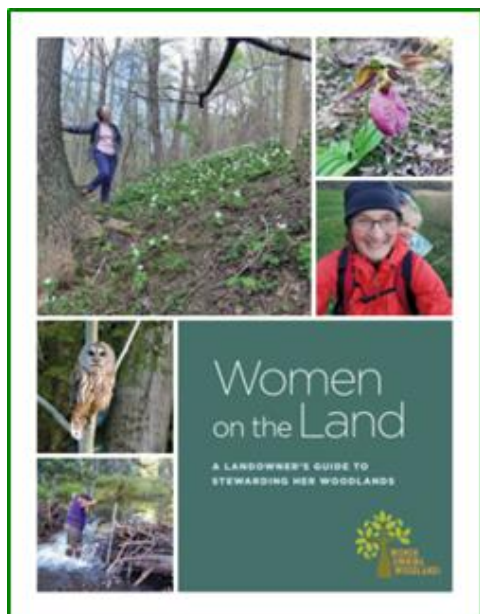
To learn more about NRCS programs, RI farmers and forest landowners can contact their local [USDA Service Center](#). Producers can also apply for NRCS programs, manage conservation plans and contracts, and view and print conservation maps by [logging into their farmers.gov account](#). If you don't have an account, [sign up today](#).



Other USDA Programs

Producers and land managers are experiencing firsthand the impacts of climate change, which is caused by the build-up of greenhouse gases in the atmosphere. With support from NRCS, farmers, ranchers and forest landowners across the nation's working lands can contribute to climate solutions. [MORE INFO](#)

Women on the Land: A Landowner's Guide to Stewarding Her Woodlands



A woman's relationship with the natural world is often unique and meaningful, and for women who own land, this connection can be rewarding as well as challenging.

Women landowners engage with their woods in various ways, including enjoying the beauty of their property, caring for wildlife and nature, and appreciating the privacy that owning land offers. No two landowners are the same, just as no two properties are the same. The variations are limitless, from living far away to having your woodland behind your home, from actively engaging in stewardship for wildlife habitat to simply enjoying it as it is. You and your circumstances determine the decisions you make for your woodland.

This publication aims to help women landowners better understand their woodlands and make informed decisions to meet their goals.

You can **download** a PDF of this guide [HERE](#).

Or, to get a printed copy of this useful guide, please contact Paul Dolan

by e-Mail: rircd2283@gmail.com or Phone: 401-500-0399



Rhode Island Association of Conservation Districts

Helping Rhode Island Conservation Districts Help Rhode Island

conserving
natural resources
for our future

2283 Hartford Avenue
Johnston, RI 02919
401-934-0840

- [Northern Rhode Island Conservation District \(NRICD\)](#) serves Providence County
- [Southern RI Conservation District \(SRICD\)](#) serves Kent and Washington Counties
- [Eastern RI Conservation District \(ERICD\)](#) serves Newport and Bristol Counties



Natural Resources Conservation Service
U.S. DEPARTMENT OF AGRICULTURE



The USDA-Natural Resource Conservation Service provides financial and technical assistance to address natural resource concerns through an array of conservation practices.

Contact [Rhode Island NRCS](#)

The [Environmental Quality Incentives Program](#) (EQIP) provides financial and technical assistance to Rhode Island agricultural producers and non-industrial forest managers to address natural resource concerns in the Ocean State. This voluntary program helps farmers, ranchers and forest landowners integrate conservation into their working lands.

The **Rhode Island State Office in Warwick, RI** is the state headquarters for NRCS operations in the Ocean State. If you're a farmer or forestland owner looking for help, **please contact your local NRCS District Conservationist—**

- **Eastern RI District Conservationist Ghyllian Alger 401-255-6210**
- **Northern RI District Conservationist Kate Bousquet 401-255-6212**
- **Southern RI District Conservationist Jameson Long 401-793-0230**

Rhode Island USDA Outreach & Public Affairs — Julie Wright: 401-786-3884

RHODE ISLAND DEPARTMENT OF ENVIRONMENTAL MANAGEMENT



The health and vitality of our lands, waters, and communities support our way of life and economy in Rhode Island. The Rhode Island Division of Agriculture and Forest Environment works to sustain, promote, and enhance Rhode Island's agricultural viability and preserve, manage, and promote healthy forests and community trees for today and for generations to come.

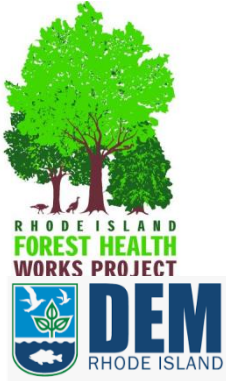
RI DEM PROGRAMS INCLUDE

[ANIMAL HEALTH PROGRAM](#)
[RI GROWN: EAT FRESH, BUY LOCAL](#)
[PRODUCE SAFETY PROGRAM](#)
[AGRICULTURE GRANT OPPORTUNITIES](#)

[LASA GRANT PROGRAM](#)
[PESTICIDES PROGRAM](#)
[URBAN FORESTRY PROGRAM](#)
[FOREST HEALTH PROGRAM](#)

[WILD FIRE PROGRAM](#)
[PEST ALERTS](#)
[SPOTTED LANTERNFLY](#)
[FOREST STEWARDSHIP](#)

RHODE ISLAND RESOURCES FOR WOODLOT OWNERS



Rhode Island Forest Health Works Regional Conservation Partnership Program

The RI Department of Environmental Management (RIDEM) Division of Forest Environment and ten partners will leverage over \$3.9M in 5 years under 2021 RCPP to permanently protect over 2,000 acres of critical, privately owned forest lands to combat fragmentation and improve wildlife habitat.

Funding is provided through a competitive process.

For more information about the next application cycle, please contact them.

[Ask.USDA.gov](https://ask.usda.gov) 1-833-ONE-USDA askusda@usda.gov

Rhode Island Forest Conservators Organization

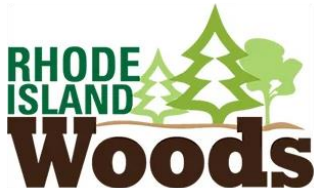
Helping to Safeguard Rhode Island's Woodlands



Rhode Island Forest Conservators Organization (RIFCO) is a non-profit organization dedicated to the protection and wise use of Rhode Island's woodland resources.

Sign up to get the [RIFCO](#) monthly e-newsletter
"[The Forest Conservationist](#)"

OR [Join RIFCO](#) and automatically receive the newsletter.



Your Online Resource for RI Forest Information

Still more than half forested, Rhode Island has extensive and varied woodlands surrounding Narragansett Bay that contribute to the state's economy, environmental benefits, and quality of life.

The website is hosted and maintained by the University of Rhode Island, Department of Natural Resources Science, with the assistance of an advisory committee. This site provides information for landowners, businesses, and outdoor enthusiasts on forest stewardship, wildlife, science and policy, legacy planning, RI woods-related products, learning opportunities, and more. It also features information about Rhode Island forestry, including forest-related businesses, upcoming events and workshops, tree identification, new forestry technologies, and other educational tools. Throughout each section of the website you will find links to fact sheets and other organizations where you can learn more. [RI Woods](#) aims to be a hub of information for all experience levels and an avenue to resources that promote good stewardship and forest health.



[Rhode Island Tree Council](#)'s mission is to create healthy urban and community forests, which underpin the state's verdant ecological tapestry, support its vibrant economy, and enrich the lives of all Rhode Islanders.

RI Tree helps improve Rhode Island's tree resources, build healthy and vibrant urban forests, and educates citizens about urban forestry. The group offers a wide variety of programs and resources designed to educate woodland owners on the benefits and value of trees. [WATCH Video](#)

RHODE ISLAND RESOURCES FOR WOODLOT OWNERS



The mission of the Center for Mediation is: To provide individuals, organizations, and businesses with constructive skills and processes to effectively resolve their differences.

[The Center for Mediation](#) is the provider for Rhode Island's Agricultural Mediation Program (RIAMP). This is the official USDA-certified program for our state.

This program offers confidential assistance to help resolve agricultural-related issues in a productive environment. For more than a decade, RIAMP has provided essential mediation services for agricultural loans, farm program compliance, and other agriculture-related issues to farmers and growers throughout Rhode Island.

Call 401-273-9999 from 9am to 4pm Mon-Fri or visit our [website](#)

OTHER RESOURCES FOR WOODLOT OWNERS



The American Tree Farm Program

We grow stewardship from the roots.

[Rhode Island Tree Farm Program](#)

The American Tree Farm System is a program for woodland owners who are committed to sustainably managing their woods for wood, water, wildlife and recreation. Each state program is run by a diverse group of partners, such as state agencies, non-profit organizations, volunteers, foresters and landowners.

To learn more, please contact **Marc Tremblay**,
Phone: 401-568-3410 or Email: mstremb@cox.net



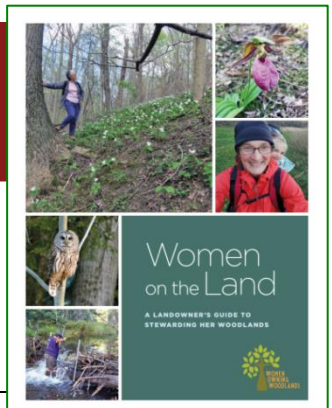
[American Forest Foundation Newsletter](#)

Sign up and receive updates from the **AFF** and/or its signature programs: the [American Tree Farm System](#) (ATFS) and [My Land Plan](#)

Unlocking the power of America's Family Forests to fight climate change.

UMassAmherst

[Women on the Land](#) intends to build a network of female landowners and stewards in Massachusetts and provide opportunities for education and connection. We host events throughout the year and encourage women to foster relationships with each other and their land.



The Newsletter of RI RC&D

The Rhode Island Resource & Development Area Council, Inc.

Disclaimer: Please Note

This newsletter's purpose is threefold. Our primary purpose is to keep our readers informed about opportunities and resources which may be available to our readership. Our second purpose is to keep our readership informed about news, events, products, opinions, and information which may directly affect our readership, either adversely or beneficially. Our third purpose is to present our readers with information that they may find enlightening or entertaining.

The opinions and political positions represented in the newsletter do not reflect the opinions or political positions of the Rhode Island Resource and Development Area Council, Inc.; nor does RI RC&D advocate or endorse any of the opinions, positions, or products mentioned in the newsletter *except where specifically stated*.

CONTACT RI RC&D

Rhode Island Resource Conservation & Development Area Council, Inc.



Paul Dolan, RI RC&D Area Director
rircd2283@gmail.com

Jo-Anne Pacheco, Coordinator
WOW (Women Owning Woodlands) Project
Jo-Anne@rircd.org



Phone: 401-500-0399 Website: rircd.org
RI RC&D Mailing Address:
2283 Hartford Avenue
Johnston, RI 02919



**Rhode Island Association
of Conservation Districts**

Helping Rhode Island Conservation Districts Help Rhode Island

**conserving
natural resources**
for our future

2283 Hartford Avenue
Johnston, RI 02919
401-934-0840

Northern Rhode Island Conservation District (NRICD) serves Providence County
Southern Rhode Island Conservation District (SRICD) serves Kent and Washington Counties
Eastern Rhode Island Conservation District (ERICD) serves Newport and Bristol Counties