



# Rhode Island Resource Conservation & Development Area Council, Inc.

*Helping People Help the Land Since 1973*

## Newsletter of August 2024

### ZOOM WEBINAR

## Stone by Stone, Wall by Wall

The History of New England's Stone Walls  
and Suggestions for their Conservation

with **Robert Thorson**  
author of "Stone by Stone"

**Monday, August 26**  
**6:00 to 7:30 pm**

[Click to Register](#)



**OR** go to <https://tinyurl.com/Thorson-Webinar> **OR** Scan QR Code >



**Presented by**

**Rhode Island Resource Conservation & Development Council**  
**Paul Dolan, Director** 401-500-0399 / [rircd2283@gmail.com](mailto:rircd2283@gmail.com)  
2283 Hartford Avenue, Johnston, RI 02919

AN EQUAL OPPORTUNITY EMPLOYER



In preparation for our **August 26 Zoom discussion with Author Robert Thorson**, Professor of Earth Sciences at the University of Connecticut, here are some links—



### [Why New England's Stone Walls Are Unlike Any Others](#)

By Robert M. Thorson, April 15, 2024

Bigger than the Great Wall of China, Hadrian's Wall, and the Pyramids of Giza combined, the region's ubiquitous stone walls are also a unique ecological habitat. The abandoned fieldstone walls of New England are every bit as iconic to the region as lobster pots, town greens, sap buckets, and fall foliage... Stone walls can be found here and there in other states, but only in New England are they nearly ubiquitous... [READ MORE](#)



### [How Stone Walls Became a Signature Landform of New England](#)

By Robert M. Thorson, November 14, 2023

This knee-high, tumbled-down, lichen-crusted stack of boulders, slabs and cobbles inspired one of America's most enduring poems, Frost's "Mending Wall." When published in 1914, the poem immediately drew attention to the barriers that divide us from one another and to the unseen forces of nature that undo what we have done... These lines resonated so strongly with President John F. Kennedy in 1962 that he sent the aging poet to meet with Soviet Premier Nikita Khrushchev in Moscow to ameliorate Cold War tensions that would soon escalate into the Cuban missile crisis... [READ MORE](#)



## SAVE THE DATES!



 **TREE ID WALK** 

With Paul Dolan  
Retired Deputy State Forester and Area Director, RI RC&D.

**Powder Mill Ledges  
Wildlife Refuge**

12 Sanderson Road (Rt.5), Smithfield, RI 02917

**Monday, September 23 from 5:00 PM to 6:00 PM**

For more **information** and to **register** contact Paul Dolan, RI RC&D Director  
Phone: 401-500-0399 or e-mail: [rircd2283@gmail.com](mailto:rircd2283@gmail.com)  
RIRC&D 2283 Hartford Avenue, Johnston, RI 02919.



 **TREE ID WALK**

With Paul Dolan  
Retired Deputy State Forester and Area Director, RI RC&D

**Canonchet Farm**

111 Strathmore Road  
Narragansett, Rhode Island 02882

Saturday, October 19 from 10:00 a.m. to Noon  
Rain Date: October 26  
Registration TBA

  
[CANONCHET.ORG](http://CANONCHET.ORG)



## Coverts I

**Saturday, November 9th**  
Scituate Senior Center  
Details TBA



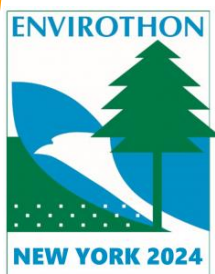
# RHODE ISLAND Envirothon

Developing Environmentally Aware Leaders of Tomorrow

Rhode Island [Envirothon](#) is an exciting environmental program, perfect for middle and high school students who love the outdoors, animals, and plants, or who are just curious about the world we live in. Throughout the year, Envirothon students attend hands-on workshops that inspire learning about our natural environment, and instills in them an appreciation of nature and the delicate environmental balances that make life possible. After studying with experts on all aspects of the environment, the program culminates each May in a one-day—

The [International Envirothon Competition](#)  
held at Hobart and William Smith Colleges in Geneva, New York  
from July 28 to August 3, 2024.

**TEAMS FROM CANADA, THE USA, CHINA, AND SINGAPORE COMPETED.**



**THE TOP THREE TEAMS FOR 2024 WERE  
TENNESSEE, NEW YORK, AND MARYLAND!  
RHODE ISLAND TEAM WHEELER SCHOOL  
MADE A GOOD SHOWING IN THREE CATEGORIES  
AQUATICS, WILDLIFE, AND FORESTRY!**

**CONGRATULATIONS TO ALL! SEE YOU AGAIN NEXT YEAR!**

See all results and [PHOTOS](#) from the 2024 International Envirothon Competition: [HERE](#)

See all results and [PHOTOS](#) from the 2024 Rhode Island Envirothon Competition: [HERE](#).

Envirothon is not just an educational program. The environmental appreciation and team-building skills the students learn are real-world experiences that they will carry throughout their lives as they become the leaders of tomorrow because Envirothon is teaching them HOW to think, not WHAT to think.

**FOR MORE INFORMATION ABOUT ENVIROTHON CONTACT**

**Paul Dolan**

**Call 401-500-0399**

**Email [president@rienvirothon.org](mailto:president@rienvirothon.org)**

VISIT THE RI  
ENVIROTHON  
[WEBSITE](#)

WATCH THE  
ENVIROTHON  
[VIDEO](#)





### [Researchers Suspect that the Number of Hybrids Will Increase with Climate Change](#)

Though these are the only ones confirmed through genetics, Indigenous communities have reported the existence of these grizzly-polar bear creatures for many years. However, it's not always easy to confirm that the bears are actually hybrids. By sight, a dirty polar bear can seem like a hybrid.

[READ MORE](#)



### [Watch: Why Europe and America's Dying Forests Could Be Good News](#)

Germany is losing its forests, fast. In the central Harz region, over 90 percent of spruce trees are dead or dying because of climate change and insect damage. But this isn't necessarily bad news. Instead of the former monoculture forest, a more resilient, wild forest is springing up, with a more abundant ecosystem.

YouTube [Channel Planet A](#) explores the shift towards an eco-friendly world — and challenges our ideas about what dealing with climate change means. [WATCH](#)



### [What happens when the permafrost thaws? | BBC Ideas](#)

Around 11% of the Earth's land mass is covered by permafrost. But its delicate balance is being threatened by climate change....

[WATCH](#)



### [Harnessing Hadrian's Heritage](#)

Athens taps into ancient Roman aqueduct to turn down the heat



### [The Vatican Goes Green](#)

Pope announces new solar plant to power Vatican City



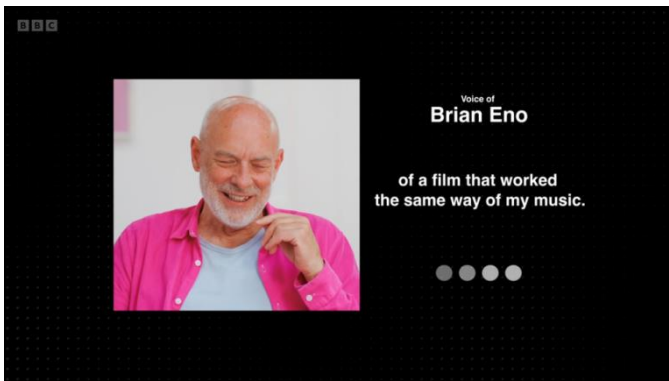


TV Meteorologists in the US and Europe are changing the way they cover the weather and the climate.

13 PHOTOS THE WILL MAKE YOU  
[CARE ABOUT THE OCEAN](#)



[WATCH THE MOVIE THAT WRITES ITSELF](#)



[NATURE BASED SOLUTIONS ARE COST EFFECTIVE:](#)



SWEDEN'S INNOVATIVE SOLUTION  
TO [POWERING ELECTRIC VEHICLES](#)



[QUIDNESSET SEAWALL SUBJECT OF PUBLIC HEARING](#)



[TROLLS IN NINIGRET PARK](#)







## Natural Resources Conservation Service

U.S. DEPARTMENT OF AGRICULTURE

### Funding Available to Help Rhode Island Farmers Replace Diesel Tractors and Other Farm Equipment with Low Emitting or Electric Equipment —

In 2024 alone, USDA is making more than \$3 billion available nationally through Biden's Inflation Reduction Act for climate-smart mitigation activities, in addition to the over \$2 billion available through the Farm Bill. This extensive funding will be used to meet demand for oversubscribed conservation programs, maximize climate benefits and to help farmers and forest landowners address their natural resource challenges.

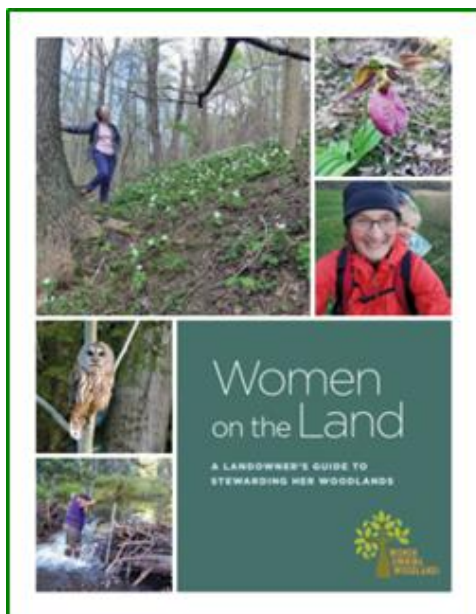
To learn more about NRCS programs, RI farmers and forest landowners can contact their local [USDA Service Center](#). Producers can also apply for NRCS programs, manage conservation plans and contracts, and view and print conservation maps by [logging into their farmers.gov account](#). If you don't have an account, [sign up today](#).



### Other USDA Programs

Producers and land managers are experiencing firsthand the impacts of climate change, which is caused by the build-up of greenhouse gases in the atmosphere. With support from NRCS, farmers, ranchers and forest landowners across the nation's working lands can contribute to climate solutions. [MORE INFO](#)

## Women on the Land: A Landowner's Guide to Stewarding Her Woodlands



*A woman's relationship with the natural world is often unique and meaningful, and for women who own land, this connection can be rewarding as well as challenging.*

*Women landowners engage with their woods in various ways, including enjoying the beauty of their property, caring for wildlife and nature, and appreciating the privacy that owning land offers. No two landowners are the same, just as no two properties are the same. The variations are limitless, from living far away to having your woodland behind your home, from actively engaging in stewardship for wildlife habitat to simply enjoying it as it is. You and your circumstances determine the decisions you make for your woodland.*

*This publication aims to help women landowners better understand their woodlands and make informed decisions to meet their goals.*

You can **download** a PDF of this guide [HERE](#).

Or, to get a printed copy of this useful guide, please contact Paul Dolan

by E-Mail: [rircd2283@gmail.com](mailto:rircd2283@gmail.com) or Phone: 401-500-0399



## Rhode Island Association of Conservation Districts

*Helping Rhode Island Conservation Districts Help Rhode Island*

conserving  
natural resources  
*for our future*

2283 Hartford Avenue  
Johnston, RI 02919  
401-934-0840

- [Northern Rhode Island Conservation District \(NRICD\)](#) serves Providence County
- [Southern RI Conservation District \(SRICD\)](#) serves Kent and Washington Counties
- [Eastern RI Conservation District \(ERICD\)](#) serves Newport and Bristol Counties



Natural Resources Conservation Service  
U.S. DEPARTMENT OF AGRICULTURE



The USDA-Natural Resource Conservation Service provides financial and technical assistance to address natural resource concerns through an array of conservation practices.

### Contact [Rhode Island NRCS](#)

The [Environmental Quality Incentives Program](#) (EQIP) provides financial and technical assistance to Rhode Island agricultural producers and non-industrial forest managers to address natural resource concerns in the Ocean State. This voluntary program helps farmers, ranchers and forest landowners integrate conservation into their working lands.

The **Rhode Island State Office in Warwick, RI** is the state headquarters for NRCS operations in the Ocean State. If you're a farmer or forestland owner looking for help, **please contact your local NRCS District Conservationist—**

- **Eastern RI District Conservationist Ghyllian Alger 401-255-6210**
- **Northern RI District Conservationist Kate Bousquet 401-255-6212**
- **Southern RI District Conservationist Jameson Long 401-793-0230**

**Rhode Island USDA Outreach & Public Affairs — Julie Wright: 401-786-3884**

## RHODE ISLAND DEPARTMENT OF ENVIRONMENTAL MANAGEMENT



The health and vitality of our lands, waters, and communities support our way of life and economy in Rhode Island. The Rhode Island Division of Agriculture and Forest Environment works to sustain, promote, and enhance Rhode Island's agricultural viability and preserve, manage, and promote healthy forests and community trees for today and for generations to come.

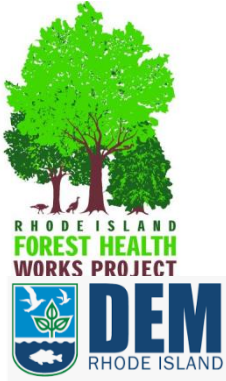
### RI DEM PROGRAMS INCLUDE

[ANIMAL HEALTH PROGRAM](#)  
[RI GROWN: EAT FRESH, BUY LOCAL](#)  
[PRODUCE SAFETY PROGRAM](#)  
[AGRICULTURE GRANT OPPORTUNITIES](#)

[LASA GRANT PROGRAM](#)  
[PESTICIDES PROGRAM](#)  
[URBAN FORESTRY PROGRAM](#)  
[FOREST HEALTH PROGRAM](#)

[WILD FIRE PROGRAM](#)  
[PEST ALERTS](#)  
[SPOTTED LANTERNFLY](#)  
[FOREST STEWARDSHIP](#)

## RHODE ISLAND RESOURCES FOR WOODLOT OWNERS



### **Rhode Island Forest Health Works Regional Conservation Partnership Program**

The RI Department of Environmental Management (RIDEM) Division of Forest Environment and ten partners will leverage over \$3.9M in 5 years under 2021 RCPP to permanently protect over 2,000 acres of critical, privately owned forest lands to combat fragmentation and improve wildlife habitat.

Funding is provided through a competitive process.

For more information about the next application cycle, please contact them.

[Ask.USDA.gov](https://ask.usda.gov) 1-833-ONE-USDA [askusda@usda.gov](mailto:askusda@usda.gov)

## Rhode Island Forest Conservators Organization

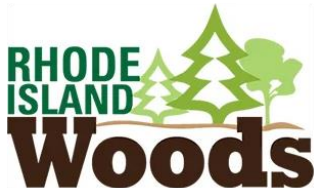
*Helping to Safeguard Rhode Island's Woodlands*



Rhode Island Forest Conservators Organization (RIFCO) is a non-profit organization dedicated to the protection and wise use of Rhode Island's woodland resources.

Sign up to get the [RIFCO](#) monthly e-newsletter  
"[The Forest Conservationist](#)"

OR [Join RIFCO](#) and automatically receive the newsletter.



## Your Online Resource for RI Forest Information

Still more than half forested, Rhode Island has extensive and varied woodlands surrounding Narragansett Bay that contribute to the state's economy, environmental benefits, and quality of life.

The website is hosted and maintained by the University of Rhode Island, Department of Natural Resources Science, with the assistance of an advisory committee. This site provides information for landowners, businesses, and outdoor enthusiasts on forest stewardship, wildlife, science and policy, legacy planning, RI woods-related products, learning opportunities, and more. It also features information about Rhode Island forestry, including forest-related businesses, upcoming events and workshops, tree identification, new forestry technologies, and other educational tools. Throughout each section of the website you will find links to fact sheets and other organizations where you can learn more. [RI Woods](#) aims to be a hub of information for all experience levels and an avenue to resources that promote good stewardship and forest health.



[Rhode Island Tree Council](#)'s mission is to create healthy urban and community forests, which underpin the state's verdant ecological tapestry, support its vibrant economy, and enrich the lives of all Rhode Islanders.

RI Tree helps improve Rhode Island's tree resources, build healthy and vibrant urban forests, and educates citizens about urban forestry. The group offers a wide variety of programs and resources designed to educate woodland owners on the benefits and value of trees. [WATCH Video](#)



## RHODE ISLAND RESOURCES FOR WOODLOT OWNERS



The mission of the Center for Mediation is: To provide individuals, organizations, and businesses with constructive skills and processes to effectively resolve their differences.

[The Center for Mediation](#) is the provider for Rhode Island's Agricultural Mediation Program (RIAMP). This is the official USDA-certified program for our state.

This program offers confidential assistance to help resolve agricultural-related issues in a productive environment. For more than a decade, RIAMP has provided essential mediation services for agricultural loans, farm program compliance, and other agriculture-related issues to farmers and growers throughout Rhode Island.

Call 401-273-9999 from 9am to 4pm Mon-Fri or visit our [website](#)

## OTHER RESOURCES FOR WOODLOT OWNERS



The American Tree Farm Program

*We grow stewardship from the roots.*

### [Rhode Island Tree Farm Program](#)

The American Tree Farm System is a program for woodland owners who are committed to sustainably managing their woods for wood, water, wildlife and recreation. Each state program is run by a diverse group of partners, such as state agencies, non-profit organizations, volunteers, foresters and landowners.

To learn more, please contact **Marc Tremblay**,  
Phone: 401-568-3410 or Email: [mstremb@cox.net](mailto:mstremb@cox.net)



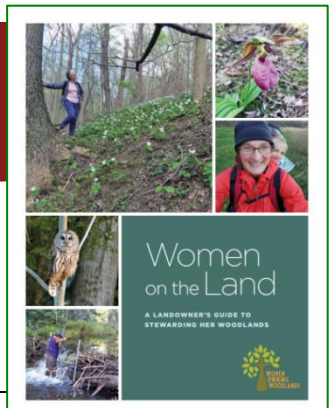
### [American Forest Foundation Newsletter](#)

Sign up and receive updates from the **AFF** and/or its signature programs: the [American Tree Farm System](#) (ATFS) and [My Land Plan](#)

*Unlocking the power of America's Family Forests to fight climate change.*

## UMassAmherst

[Women on the Land](#) intends to build a network of female landowners and stewards in Massachusetts and provide opportunities for education and connection. We host events throughout the year and encourage women to foster relationships with each other and their land.



# The Newsletter of RI RC&D

## The Rhode Island Resource & Development Area Council, Inc.

### Disclaimer: Please Note

This newsletter's purpose is threefold. Our primary purpose is to keep our readers informed about opportunities and resources which may be available to our readership. Our second purpose is to keep our readership informed about news, events, products, opinions, and information which may directly affect our readership, either adversely or beneficially. Our third purpose is to present our readers with information that they may find enlightening or entertaining.

The opinions and political positions represented in the newsletter do not reflect the opinions or political positions of the Rhode Island Resource and Development Area Council, Inc.; nor does RI RC&D advocate or endorse any of the opinions, positions, or products mentioned in the newsletter *except where specifically stated*.

### CONTACT RI RC&D

#### Rhode Island Resource Conservation & Development Area Council, Inc.



**Paul Dolan, RI RC&D Area Director**  
[rircd2283@gmail.com](mailto:rircd2283@gmail.com)

**Jo-Anne Pacheco, Coordinator**  
*WOW (Women Owning Woodlands) Project*  
[Jo-Anne@rifarmenergy.org](mailto:Jo-Anne@rifarmenergy.org)

[RIRCD.ORG](http://RIRCD.ORG) Phone: 401-500-0399



**RI RC&D Mailing Address:**  
2283 Hartford Avenue  
Johnston, RI 02919



**Rhode Island Association  
of Conservation Districts**

*Helping Rhode Island Conservation Districts Help Rhode Island*

**conserving  
natural resources**  
*for our future*

2283 Hartford Avenue  
Johnston, RI 02919  
401-934-0840

[Northern Rhode Island Conservation District \(NRICD\)](#) serves Providence County  
[Southern Rhode Island Conservation District \(SRICD\)](#) serves Kent and Washington Counties  
[Eastern Rhode Island Conservation District \(ERICD\)](#) serves Newport and Bristol Counties