



Rhode Island Resource Conservation & Development Area Council, Inc.

Helping People Help the Land Since 1973

Newsletter of May 2024



**MAY 21
PAGE 3**

[Restoration](#)

[RI State House Tours](#)

[Independent Man](#)

Rhode Island Independence Day May 4, 1776



AN IN-PERSON WALK

FORESTRY FOR THE BIRDS

Wednesday, 8 May 2024

2:00 to 4:00 PM

Norman Bird Sanctuary

583 3rd Beach Road, Middletown, RI 02842

Presentation by Paul Dolan, RI RC&D Director

Walk led by Jay Manning, NBS Conservation Manager

RAIN DATE May 15th



RIRC&D



This RI RC&D program is presented in partnership with the Norman Bird Sanctuary

REGISTER through [NORMAN BIRD SANCTUARY](#)

<https://normanbirdsanctuary.org/events/forestry-for-the-birds-workshop/>

QUESTIONS? PLEASE CONTACT PAUL DOLAN 401-500-0399 rircd2283@gmail.com



MAY 11 & OCTOBER 12
WORLD MIGRATORY BIRD DAY 2024
INSECTS

World Migratory Bird Day CMS AEW Environment for the Americas EAAF

ENDANGERED SPECIES DAY
17 MAY 2024

23 MAY 2024

FOUNDED BY
TORTOISE.COM™
AMERICAN TORTOISE RESCUE

SHELLEBRATE #WORLDTURTLEDAY

MEMORIAL DAY
— HONORING ALL WHO SERVED! —
27 MAY 2024



RHODE ISLAND Envirothon

Developing Environmentally Aware Leaders of Tomorrow

Rhode Island [Envirothon](#) is an exciting environmental program, perfect for middle and high school students who love the outdoors, animals, and plants, or who are just curious about the world we live in. Throughout the year, Envirothon students attend hands-on workshops that inspire learning about our natural environment, and instills in them an appreciation of nature and the delicate environmental balances that make life possible. After studying with experts on all aspects of the environment, the program culminates each May in a one-day—

Battle of the Environmental Minds!

**PLEASE PLAN TO JOIN US TO WATCH THIS EPIC BATTLE ON
TUESDAY, MAY 21, 2024 FROM 8:00 AM TO 1:00 PM
at Camp Hoffman in South Kingstown, RI**

2850 Ministerial Rd, South Kingstown, RI 02879

**Be there to see which Rhode Island team will go on to compete in the
2024 National Envirothon Competition in Geneva, New York!**

Rhode Island Envirothon Team Champion 2023— Wheeler School!



Envirothon is not just an educational program. The environmental appreciation and team-building skills the students learn are real-world experiences that they will carry throughout their lives as they become the leaders of tomorrow because

Envirothon is teaching them HOW to think, not WHAT to think.

FOR MORE INFORMATION ABOUT ENVIROTHON CONTACT

VISIT THE RI
ENVIRONTHON
[WEBSITE](#)

Paul Dolan
Call 401-500-0399
Email president@rienvirothon.org

WATCH THE
[ENVIROTHON](#)
[VIDEO](#)



Natural Resources Conservation Service

U.S. DEPARTMENT OF AGRICULTURE

Funding Available to Help Rhode Island Farmers Replace Diesel Tractors and Other Farm Equipment with Low Emitting or Electric Equipment —

In 2024 alone, USDA is making more than \$3 billion available nationally through Biden's Inflation Reduction Act for climate-smart mitigation activities, in addition to the over \$2 billion available through the Farm Bill. This extensive funding will be used to meet demand for oversubscribed conservation programs, maximize climate benefits and to help farmers and forest landowners address their natural resource challenges.

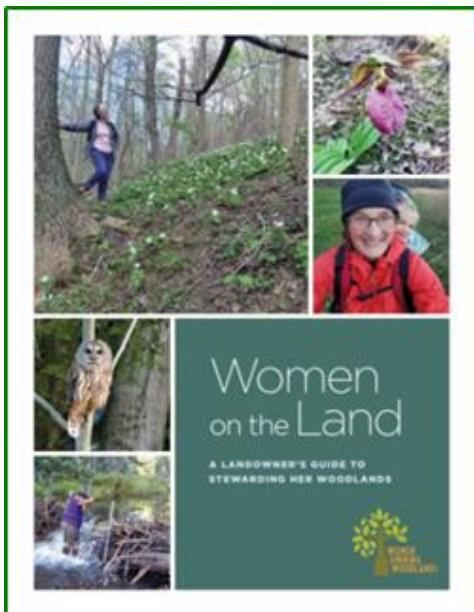
To learn more about NRCS programs, RI farmers and forest landowners can contact their local [USDA Service Center](#). Producers can also apply for NRCS programs, manage conservation plans and contracts, and view and print conservation maps by [logging into their farmers.gov account](#). If you don't have an account, [sign up today](#).



Other USDA Programs

Producers and land managers are experiencing firsthand the impacts of climate change, which is caused by the build-up of greenhouse gases in the atmosphere. With support from NRCS, farmers, ranchers and forest landowners across the nation's working lands can contribute to climate solutions. [MORE INFO](#)

Women on the Land: A Landowner's Guide to Stewarding Her Woodlands



A woman's relationship with the natural world is often unique and meaningful, and for women who own land, this connection can be rewarding as well as challenging.

Women landowners engage with their woods in various ways, including enjoying the beauty of their property, caring for wildlife and nature, and appreciating the privacy that owning land offers. No two landowners are the same, just as no two properties are the same. The variations are limitless, from living far away to having your woodland behind your home, from actively engaging in stewardship for wildlife habitat to simply enjoying it as it is. You and your circumstances determine the decisions you make for your woodland.

This publication aims to help women landowners better understand their woodlands and make informed decisions to meet their goals.

You can **download** a PDF of this guide [HERE](#).

Or, to get a printed copy of this useful guide, please contact Paul Dolan

by E-Mail: rircd2283@gmail.com or Phone: 401-500-0399

SAVE THESE DATES!

Details and Registration Information for All Events to follow soon!



In Person: Ecosystem Gardening with RI Native Plants

Monday, June 24

from 6:30 to 7:30 pm

Includes a guided tour of the Community Garden **after** the workshop.

Program presented by Karen Asher

Master Gardener and Native Plant Specialist

This program is presented in collaboration with the North Scituate Public Library.

Register through N. Scituate Library by phone 401-647-5133 or email leah@scituatelibrary.org



Zoom Webinar

With Robert Thorson, author of "Stone by Stone"

Monday, August 26

from 6:00 to 7:30 pm

Registration begins in June. Details to follow.



In Person: Tree ID Walk

Monday, September 23

from 5:00 to 6:00 pm

To REGISTER, please contact PAUL DOLAN

Phone 401-500-0399 / e-Mail rircd2283@gmail.com

7,000-Year-Old Canoes from Italy Oldest Ever Found in the Mediterranean



The five large dugout canoes — which were constructed of alder, oak, poplar and European beech — were built between 5700 and 5100 B.C., radiocarbon dating revealed. The canoes found at the bottom of a lake in Italy were used more than 7,000 years ago for fishing and transport by people living in a Neolithic village near what is now Rome... Archaeologists discovered the boats at La Marmotta, a prehistoric coastal settlement that is now underwater... [READ MORE](#)

Watch: PBS [Deep Look](#) and PBS [Terra](#)

Ferns Get Freaky



This Mushroom Fakes Its Own Death to Trick Flies



This Mushroom Starts Killing You Before You Even Realize It



Viking Passes Discovered



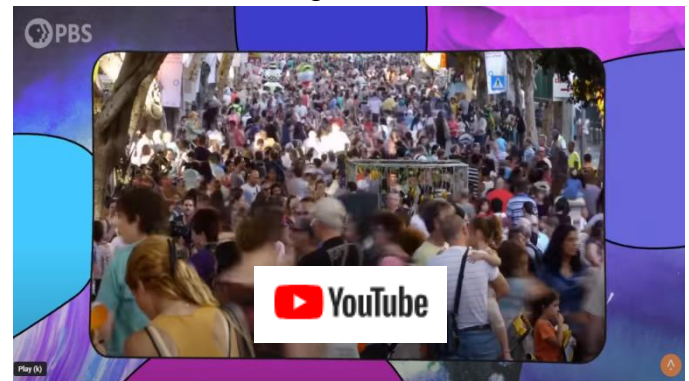
Why It's Time to Stop Saving the Planet



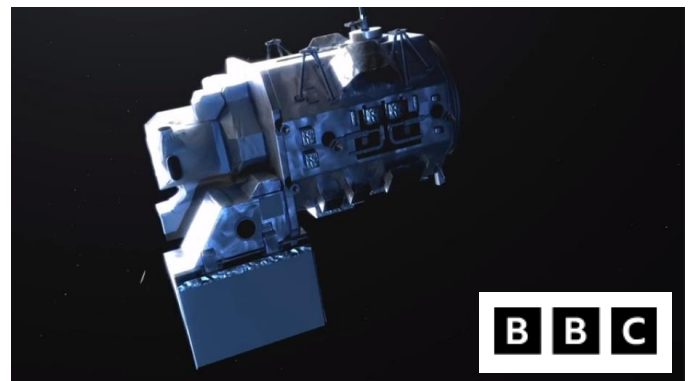
Here's EXACTLY What to Do When the Next Megaquake Hits



What Happens When Demographics Change Forever?



Earth Transformation in Satellite Images





Bill Would Add \$16M to Green Economy Bond for Land Preservation

A bill introduced by Rep. Megan Cotter, D-Exeter, would inject \$16 million into this year's Green Economy Bond to fund four separate programs to protect land from development and provide a healthy boost for the state's environment... The programs — which include money for state and local open space acquisition, farmland preservation, forest management, and habitat restoration — are usually included in a single bond question to be approved by voters every two years... [READ MORE](#)



Turtle Crossing Season is Here: Slow Down, Let Them Cross Safely

In May and June, aquatic turtles such as the eastern painted turtle and American snapping turtle, will be leaving their watery habitats of ponds, rivers, and wetlands to set out and find suitable nesting sites to lay their eggs. For many, this includes crossing busy roadways... According to the [Wildlife Clinic of Rhode Island](#), the Saunterstown-based nonprofit received 40 turtles in 2023 that had been hit by cars, but only 10 were able to be rehabilitated. This is why it is so critical that drivers slow down when passing close to ponds, rivers, and wetlands in the spring. [READ MORE](#)



Volunteers Discover R.I.'s Rarest Turtle at New Sites

A pilot project using volunteers to scout for new populations of Rhode Island's rarest turtle, the diamondback terrapin, turned up 15 new sites where the turtles have been confirmed. But despite the new populations, the biologist who led the project said the state's terrapins are no less threatened than they were before the new populations were discovered... Herpetologist Scott Buchanan, a wildlife biologist at the Rhode Island Department of Environmental Management, said that prior to 1990, when a population of terrapins was discovered in Barrington, "no one had seen a terrapin in Rhode Island in many years." [READ MORE](#)



California's Grunion Run

Since 2002, the rituals have been observed by "grunion greeters"—citizen scientists who volunteer to observe the fish at 50 California beaches... The fish are near-impossible to count. "The 'normal' methods for stock assessment do not work for these species," explains Karen Martin of Pepperdine University who has been studying grunion for decades. As a result, there's no formal statistic for how many there are—and so they don't have a conservation status either, although Martin says they are certainly under threat and numbers have declined significantly in the past decade according to her research... [READ MORE](#)



Rhode Island Association of Conservation Districts

Helping Rhode Island Conservation Districts Help Rhode Island

conserving
natural resources
for our future
2283 Hartford Avenue
Johnston, RI 02919
401-934-0840

- [Northern Rhode Island Conservation District \(NRICD\)](#) serves Providence County
- [Southern RI Conservation District \(SRICD\)](#) serves Kent and Washington Counties
- [Eastern RI Conservation District \(ERICD\)](#) serves Newport and Bristol Counties



Natural Resources Conservation Service

U.S. DEPARTMENT OF AGRICULTURE



The USDA-Natural Resource Conservation Service provides financial and technical assistance to address natural resource concerns through an array of conservation practices.

Contact [Rhode Island NRCS](#)

The [Environmental Quality Incentives Program](#) (EQIP) provides financial and technical assistance to Rhode Island agricultural producers and non-industrial forest managers to address natural resource concerns in the Ocean State. This voluntary program helps farmers, ranchers and forest landowners integrate conservation into their working lands.

The **Rhode Island State Office in Warwick, RI** is the state headquarters for NRCS operations in the Ocean State. If you're a farmer or forestland owner looking for help, **please contact your local NRCS District Conservationist—**

- **Eastern RI District Conservationist Ghyllian Alger 401-255-6210**
- **Northern RI District Conservationist Kate Bousquet 401-255-6212**
- **Southern RI District Conservationist Jameson Long 401-793-0230**

Rhode Island USDA Outreach & Public Affairs — Julie Wright: 401-786-3884

RHODE ISLAND DEPARTMENT OF ENVIRONMENTAL MANAGEMENT



The health and vitality of our lands, waters, and communities support our way of life and economy in Rhode Island. The Rhode Island Division of Agriculture and Forest Environment works to sustain, promote, and enhance Rhode Island's agricultural viability and preserve, manage, and promote healthy forests and community trees for today and for generations to come.

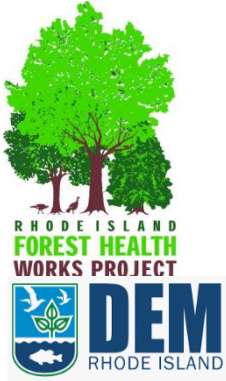
RI DEM PROGRAMS INCLUDE

[ANIMAL HEALTH PROGRAM](#)
[RI GROWN: EAT FRESH, BUY LOCAL](#)
[PRODUCE SAFETY PROGRAM](#)
[AGRICULTURE GRANT OPPORTUNITIES](#)

[LASA GRANT PROGRAM](#)
[PESTICIDES PROGRAM](#)
[URBAN FORESTRY PROGRAM](#)
[FOREST HEALTH PROGRAM](#)

[WILD FIRE PROGRAM](#)
[PEST ALERTS](#)
[SPOTTED LANTERNFLY](#)
[FOREST STEWARDSHIP](#)

RHODE ISLAND RESOURCES FOR WOODLOT OWNERS



Rhode Island Forest Health Works Regional Conservation Partnership Program

The RI Department of Environmental Management (RIDEM) Division of Forest Environment and ten partners will leverage over \$3.9M in 5 years under 2021 RCPP to permanently protect over 2,000 acres of critical, privately owned forest lands to combat fragmentation and improve wildlife habitat.

Funding is provided through a competitive process.

For more information about the next application cycle, please contact them.

[Ask.USDA.gov](https://ask.usda.gov) 1-833-ONE-USDA askusda@usda.gov

Rhode Island Forest Conservators Organization

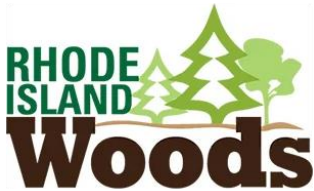
Helping to Safeguard Rhode Island's Woodlands



Rhode Island Forest Conservators Organization (RIFCO) is a non-profit organization dedicated to the protection and wise use of Rhode Island's woodland resources.

Sign up to get the [RIFCO](#) monthly e-newsletter
"[The Forest Conservationist](#)"

OR [Join RIFCO](#) and automatically receive the newsletter.



Your Online Resource for RI Forest Information

Still more than half forested, Rhode Island has extensive and varied woodlands surrounding Narragansett Bay that contribute to the state's economy, environmental benefits, and quality of life.

The website is hosted and maintained by the University of Rhode Island, Department of Natural Resources Science, with the assistance of an advisory committee. This site provides information for landowners, businesses, and outdoor enthusiasts on forest stewardship, wildlife, science and policy, legacy planning, RI woods-related products, learning opportunities, and more. It also features information about Rhode Island forestry, including forest-related businesses, upcoming events and workshops, tree identification, new forestry technologies, and other educational tools. Throughout each section of the website you will find links to fact sheets and other organizations where you can learn more. [RI Woods](#) aims to be a hub of information for all experience levels and an avenue to resources that promote good stewardship and forest health.



[Rhode Island Tree Council](#)'s mission is to create healthy urban and community forests, which underpin the state's verdant ecological tapestry, support its vibrant economy, and enrich the lives of all Rhode Islanders.

RI Tree helps improve Rhode Island's tree resources, build healthy and vibrant urban forests, and educates citizens about urban forestry. The group offers a wide variety of programs and resources designed to educate woodland owners on the benefits and value of trees. [WATCH Video](#)

RHODE ISLAND RESOURCES FOR WOODLOT OWNERS



The mission of the Center for Mediation is: To provide individuals, organizations, and businesses with constructive skills and processes to effectively resolve their differences.

[The Center for Mediation](#) is the provider for Rhode Island's Agricultural Mediation Program (RIAMP). This is the official USDA-certified program for our state.

This program offers confidential assistance to help resolve agricultural-related issues in a productive environment. For more than a decade, RIAMP has provided essential mediation services for agricultural loans, farm program compliance, and other agriculture-related issues to farmers and growers throughout Rhode Island.

Call 401-273-9999 from 9am to 4pm Mon-Fri or visit our [website](#)

OTHER RESOURCES FOR WOODLOT OWNERS



The American Tree Farm Program

We grow stewardship from the roots.

[Rhode Island Tree Farm Program](#)

The American Tree Farm System is a program for woodland owners who are committed to sustainably managing their woods for wood, water, wildlife and recreation. Each state program is run by a diverse group of partners, such as state agencies, non-profit organizations, volunteers, foresters and landowners.

To learn more, please contact **Marc Tremblay**,
Phone: 401-568-3410 or Email: mstremb@cox.net



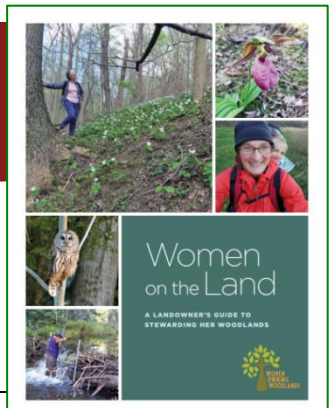
[American Forest Foundation Newsletter](#)

Sign up and receive updates from the **AFF** and/or its signature programs: the [American Tree Farm System](#) (ATFS) and [My Land Plan](#)

Unlocking the power of America's Family Forests to fight climate change.

UMassAmherst

[Women on the Land](#) intends to build a network of female landowners and stewards in Massachusetts and provide opportunities for education and connection. We host events throughout the year and encourage women to foster relationships with each other and their land.



The Newsletter of RI RC&D

The Rhode Island Resource & Development Area Council, Inc.

Disclaimer: Please Note

This newsletter's purpose is threefold. Our primary purpose is to keep our readers informed about opportunities and resources which may be available to our readership. Our second purpose is to keep our readership informed about news, events, products, opinions, and information which may directly affect our readership, either adversely or beneficially. Our third purpose is to present our readers with information that they may find enlightening or entertaining.

The opinions and political positions represented in the newsletter do not reflect the opinions or political positions of the Rhode Island Resource and Development Area Council, Inc.; nor does RI RC&D advocate or endorse any of the opinions, positions, or products mentioned in the newsletter *except where specifically stated*.

CONTACT RI RC&D

Rhode Island Resource Conservation & Development Area Council, Inc.



Paul Dolan, RI RC&D Area Director
rircd2283@gmail.com

Jo-Anne Pacheco, Coordinator
WOW (Women Owning Woodlands) Project
Jo-Anne@rifarmenergy.org

RIRCD.ORG Phone: 401-500-0399



RI RC&D Mailing Address:
2283 Hartford Avenue
Johnston, RI 02919



**Rhode Island Association
of Conservation Districts**

Helping Rhode Island Conservation Districts Help Rhode Island

**conserving
natural resources**
for our future

2283 Hartford Avenue
Johnston, RI 02919
401-934-0840

[Northern Rhode Island Conservation District \(NRICD\)](#) serves Providence County
[Southern Rhode Island Conservation District \(SRICD\)](#) serves Kent and Washington Counties
[Eastern Rhode Island Conservation District \(ERICD\)](#) serves Newport and Bristol Counties