



Rhode Island Resource Conservation & Development Area Council, Inc.

Helping People Help the Land Since 1973

Newsletter of July 2023

ZOOM WEBINAR

**“Managing Habitat to Benefit
At-Risk Rhode Island
Wildlife”**

WOMEN OWNING WOODLANDS

Wednesday, August 16, 2023 from 6:00 PM to 7:00 PM

Please plan to join us for this very cool ZOOM Webinar:

Melissa Hayden

State Biologist for RI USDA-NRCS



Natural Resources Conservation Service
U.S. DEPARTMENT OF AGRICULTURE

will be with us to discuss habitat for Eastern Cottontail, Northern Long-Eared Bats, Wood Turtles, and Spadefoot Toads



For more **INFORMATION** and to **REGISTER**
contact **Paul Dolan**, RI RC&D Director

Phone: 401-500-0399 or e-mail: rircd2283@gmail.com

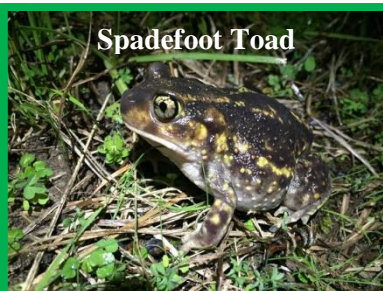
Eastern Cottontail



Northern Long-Eared Bat



Spadefoot Toad



Wood Turtle





Women's Chainsaw Workshop for WOMEN OWNING WOODLANDS

Saturday and Sunday
October 14 and 15, 2023

8:00 a.m. to 4:00 p.m. each day

Cost: \$100 to be paid upon registration
Non-Refundable

Lodging and Meals ARE NOT included.

Saturday Session:

The Instructional Part of the Program
George Washington State Campground
and Management Area

2185 Putnam Pike, Chepachet, RI 02814

Sunday Session:

The Hands-On Practice & Application
Snake Den Farm

90 Brown Avenue, Johnston, RI 02819

Please register early as the course is
LIMITED to 10 participants.

For more information or to REGISTER Contact

Paul Dolan, RI RC&D Area Director
401-500-0399 rircd2283@gmail.com

This two-day chainsaw safety course is designed for women. The focus of this course is overwhelmingly on safety: safe posture, safe practices, safe clothing, and safe habits. The first session will provide information about chainsaws, maintenance, safety clothing, and introduce participants to good practices.

The second day will be a full day of hands-on practice and application.

Beginners welcome! Come learn chainsaw safety, what safety gear is needed, and what to look for when buying a chainsaw. Learn how to cut firewood, clear brush, and buck small trees safely. PPE required.

This [RI RC&D](#) program is presented with the support of the
[USDA Natural Resource Conservation Service](#)
and the [Forest Stewards Guild](#).



To prepare, you can watch
these videos from the
[Forest Stewards Guild](#):

Women's Chainsaw Safety
Fundamentals

Part I

<https://youtu.be/Ng6luz3vNPE>

and **Part II**

<https://youtu.be/HpsXx5Q1e0c>

These videos ARE NOT A
SUBSTITUTE for in-person
hands-on training and
instruction.

The videos are intended to
provide **BASIC INFORMATION**
while creating a safe and
welcoming learning environment
for women who are new to
chainsaws.

FOREST HISTORY



[America's Forests: A History of Resiliency and Recovery](#)

At the dawn of the seventeenth century, America's first European settlers stood in awe before a seemingly endless forest that blanketed the eastern third of the nation... in 1865, the inexhaustibility of forests was finally called into question...

This old video from 1993 contains rare film footage and turn-of-the-century photographs graphically depict the forest, watershed, and wildlife conditions which led to our first national conservation movement... [WATCH](#)



[Forest History Society](#)

The Forest History Society is a nonprofit library and archives that collects, preserves, and shares the world's forest and conservation history... [MORE](#)



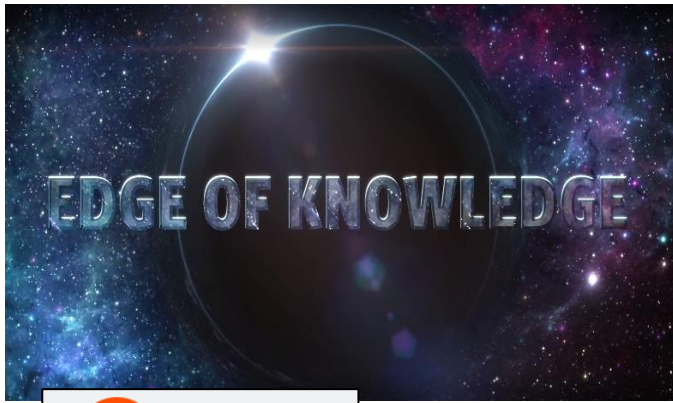
[American Forests](#)

In 1875, led by physician and horticulturist Dr. John Aston Warder, concerned citizens founded the American Forestry Association (now American Forests) in response to rapid and wasteful postwar development and intense wildfires....



[New England Forestry Foundation](#)

In the 1930s and 40s, an eclectic group of foresters and outdoor enthusiasts led by Harris Reynolds grew concerned about clear-cutting and destructive management on private New England forestlands. Much of the region's once vast and ecologically rich forests had only just begun to regenerate after centuries of deforestation, and parcel owners often acted with an eye to quick profit or simply lacked an understanding of how to care for a forest.



[The Future of Climate Change](#)

First, let's get this bit of inconvenient truth out of the way: anthropogenic climate change— that is, climate change caused by humans— is well-established science. The evidence is overwhelming, and attempted rebuttals are incomplete, flawed, or fabricated. The questions we need to be answering, as Paul points out in the video, aren't "Is this even happening?" or "Should we do something?" The questions we're now faced with are "How bad is it going to get?" and "What, exactly, do we need to be doing?" [WATCH](#)

[Montana calls UN climate report “hearsay” at landmark youth-led climate trial](#)

A landmark climate trial kicked off in Montana, with 16 young residents demanding that the state be ordered to do more to protect residents' constitutional rights by reducing emissions and tossing out state policies promoting the fossil fuels industry...The trial comes shortly after the state legislature passed a new law that "explicitly prohibits" greenhouse gas emissions and climate effects to be considered in state agencies' environmental impact reviews... [READ MORE](#)

[Inside the battle to build a \\$1.2 billion fish barricade](#)

Over the past 50-some years, invasive carp, a stunningly destructive invasive species, have infested almost every waterway in the Midwest, from South Dakota to beyond the Mississippi Delta, and have even reached West Virginia. In some waters, it has been reported that around 90 percent of the fish are invasive carp; in one section of the Illinois River, a Mississippi tributary, they make up more than 75 percent of the total biomass in the water. [READ MORE](#)



[Rampant groundwater pumping has changed the tilt of Earth's axis](#)

Depletion of underground reservoirs has shifted the Earth's weight distribution enough to tilt the planet's axis by around an inch-and-a-half per year between 1993 and 2010 ... The net water lost from underground reservoirs between 1993 and 2010 is estimated to be more than 2 trillion tonnes. That has caused the geographic North Pole to shift at a speed of 4.36 centimetres per year, researchers have calculated. The results appeared on 15 June in *Geophysical Research Letters*.... [READ MORE](#)

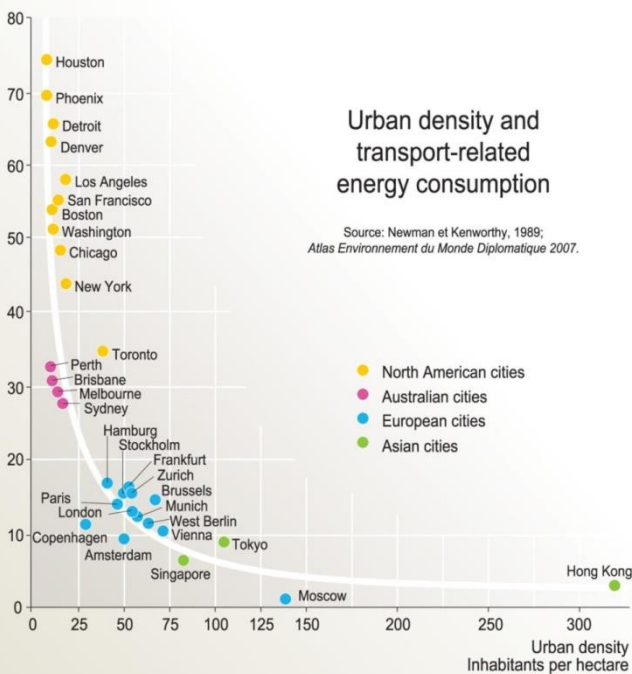


How Cities of the Future Are Embracing Nature

In this video, urban designer Alexandros Washburn breaks down how cities are reimagining their relationship with the natural world, and where a new symbiotic future is already taking shape. [WATCH](#)

COMMON \ EDGE

Transport-related energy consumption
Gigajoules per capita per year



[What's the Matter with American Cities?](#)

For frequent travelers to Europe, it is frustrating to see the increasingly different urban conditions on the other side of the Atlantic. In Europe, cities are largely appreciated and embraced, and have turned into high-quality environments for inclusive and sustainable living... Research shows that the average resident in a typical western U.S. city, such as Los Angeles or Phoenix, contributes approximately six times more carbon to the atmosphere per capita than an average European city resident. Singapore, Tokyo and Hong Kong have even lower carbon footprints. And since the state of California lists transportation as the most significant cause of carbon output, this makes the differences between cities on both sides of the Atlantic not just a personal choice, but one of the key drivers for why the planet could become less habitable for humans in the future.... [READ MORE](#)



[Pigs help transition France's Champagne vineyards to organic...](#)

Originally from New Zealand, the "kunekune" pigs -- a Maori word meaning "round and fat" -- snuffle through the earth supporting neatly planted rows of grapevines. Their "thorough" and "precise" work can fight weeds as well as mildew and other fungi and aerate the soil, says wine industry consultant Olivier Zebic. First tested last year in the Bordeaux wine-growing region, the pigs may be a better choice than the other eco-friendly solution, sheep -- who "just trim" unwanted plants, Zebic adds... [READ MORE](#)



[Love Song to Small Farms](#)

Controlled Environment Agriculture has the immense potential to transform our local food systems and provide much-needed access to fresh produce. Nevertheless, it is crucial to sing praise to and nurture the small farms that play pivotal roles in creating alternative foodways and cultivating community and culture through farming. ...Small-scale farms grow 50% of our food calories on 30% of the agricultural land. They tend to be more productive than larger, conventional farms, and have a stronger commitment to protecting soil fertility and productivity...[READ MORE](#)



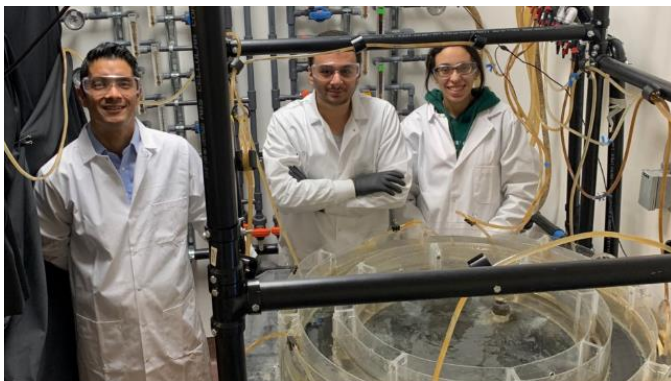
[The Future is Fungi: The Rise and Rhizomes of Mushroom Culture](#)

FREE: Tuesday, July 11 | at 1 p.m. EDT | Via Zoom

[Register today!](#)

What is it about mushrooms that spark our imaginations? Why do they inspire both wonder and terror? And what might their future look like on our ever-changing planet?

The conversation will be moderated by Corey Pressman, a faculty member of University of Portland's Integrative Health and Wellness program



[Mild Fever Helps Clear Infections Faster](#)

Research on fish shows waiting before reaching for medications may be beneficial for humans.

Researchers found untreated moderate fever helped fish clear their bodies of infection rapidly, controlled inflammation and repaired damaged tissue. "We let nature do what nature does, and in this case, it was very much a positive thing," said immunologist Daniel Barreda... Moderate fever is self-resolving, meaning the body can both induce it and shut it down naturally without medication... [READ MORE](#)



RHODE ISLAND WOODS

Your online resource for RI woodlots information

Land Stewardship for Small Forested Properties

What is Woodscaping? Woodscaping is a term for active management of small woodland parcels (in Rhode Island a small woodland parcel is considered to be less than 10 acres) in suburban and rural areas where more and more people are living. It is land stewardship that is done in a way that respects ecological values at the same time that it meets landowner goals such as creating a walking or skiing path, watching birds, enjoying privacy, cutting firewood or timber, making maple syrup, or other activities.

Why Care About Protecting Small Tracts of Rhode Island Forestland?

- Small acreage forest ownerships are on the rise
- The pattern of small forest and meadow ownership magnifies pressure on public water supply, wildlife habitat and wood supply
- Wise stewardship depends on the many people that own and care for their property
- Existing stewardship programs are aimed at larger woodland tracts, but not smaller ones

The [Woodscaping TOC](#) (Table of Contents) has links to Fact Sheets and Resources for helping owners become good steward of their land.



The American Tree Farm Program

We grow stewardship from the roots.

[Rhode Island Tree Farm Program](#)

The American Tree Farm System is a program for woodland owners who are committed to sustainably managing their woods for wood, water, wildlife and recreation. Each state program is run by a diverse group of partners, such as state agencies, non-profit organizations, volunteers, foresters and landowners.


To learn more, please contact **Marc Tremblay**,
Phone: 401-568-3410 or Email: mstremb@cox.net

Rhode Island Forest Health Works RCPP

[The Rhode Island Forest Health Works Regional Conservation Partnership Program](#)

The RI Department of Environmental Management (DEM) Division of Forest Environment and ten partners will leverage over \$3.9M in 5 years under 2021 RCPP to permanently protect over 2,000 acres of critical, privately owned forest lands to combat fragmentation and improve wildlife habitat. Funding is provided through a competitive process. For more information about the next application cycle, please contact them.

RESOURCES FOR WOODLOT OWNERS—



Rhode Island Forest Conservators Organization
Helping to Safeguard Rhode Island's Woodlands

Rhode Island Forest Conservators Organization (RIFCO) is a non-profit organization dedicated to the protection and wise use of Rhode Island's woodland resources.



To receive the [RIFCO](#) monthly e-newsletter

"[The Forest Conservationist](#)," visit our [Contact](#) page and submit a request online.
Or [Join RIFCO](#) and automatically receive a subscription as a [RIFCO](#) member.



STATE OF RHODE ISLAND

Department of Environmental
Management

About Agriculture & Forest Environment

The health and vitality of our lands, waters, and communities support our way of life and economy in Rhode Island. The Rhode Island Division of Agriculture and Forest Environment works to sustain, promote, and enhance Rhode Island's agricultural viability and preserve, manage, and promote healthy forests and community trees for today and for generations to come.

[Animal Health Program](#)

[RI Grown: Eat Fresh, Buy Local](#)

[Produce Safety Program](#)

[Agriculture Grant Opportunities](#)

[LASA Grant Program](#)

[Pesticides Program](#)

[Urban Forestry Program](#)

[Forest Health Program](#)

[Wild Fire Program](#)

[Pest Alerts](#)

[Spotted Lanternfly](#)

[Forest Stewardship](#)

THE UNIVERSITY OF RHODE ISLAND

Plant Sciences and Entomology

College of the Environment and Life Sciences

Rhode Islanders have a unique relationship to the environment—and for our communities, ornamental plants, turf, agritourism, and conservation lands are as important as food crops. Our programs in ornamental horticulture, turfgrass management, food crop production, and control of invasive species, and insect-vectored diseases support all these aspects of the local economy. You'll be fully prepared for a job in agricultural industries, or to conduct your own research.

RESOURCES FOR WOODLOT OWNERS—

[RIWP: Your Online Resource for RI Forest Information](#)



The Rhode Island Woodland Partnership (RIWP) advances the stewardship and long-term protection of Rhode Island's woodlands to benefit the local economy, ecological values, and community enjoyment and health. The RIWP strives to increase the impact of forest conservation measures through education and information sharing.

RI DEM

[Forest Stewardship Program](#)

This program was developed for woodland owners who want to know more about their woodland and how to manage it. The Rhode Island FSP, in cooperation with the [USDA Forest Service](#), supports private forest landowners' efforts to manage, enjoy, and care for their land long-term. This program is designed to both recognize the public benefits of privately-owned working lands and good land management, and to help private landowners protect the ecosystem benefits and value of their forest.



[USDA Environmental Quality Incentives RI](#)

[EQIP Forestry Initiative Information](#)

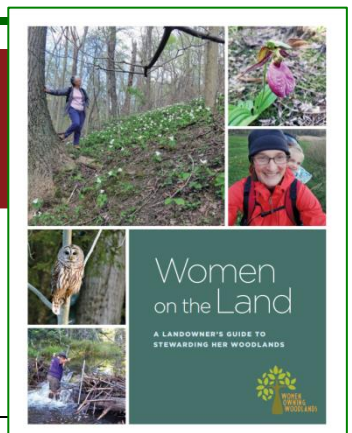
The Environmental Quality Incentives Program (EQIP) is a voluntary program for people who want to develop and improve wildlife habitat primarily on private land. Applicants with forestland or in fields with 25 percent more woody cover (aerial canopy cover) of tree species and who wish to install practices that will protect or enhance fish and wildlife habitat should apply to this initiative.

[American Forest Foundation Newsletter](#)

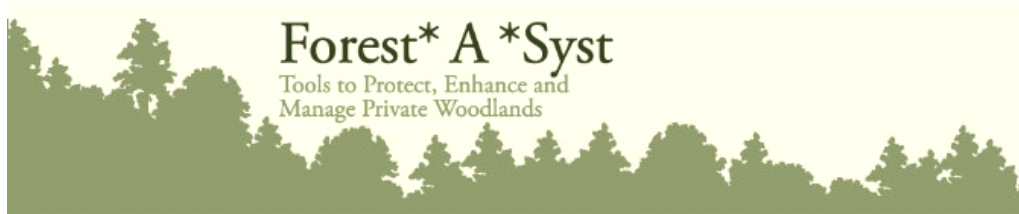
Sign up and receive updates from the **AFF** and/or its signature programs: the [American Tree Farm System](#) (ATFS) and [My Land Plan](#)

UMassAmherst

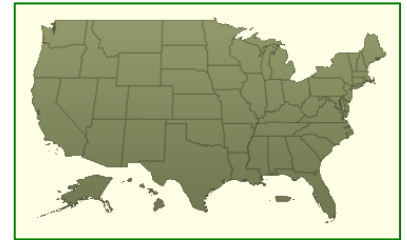
[Women on the Land](#) aims to build a network of female landowners and stewards in Massachusetts and provide opportunities for education and connection. We host events throughout the year and encourage women to foster relationships with each other and their land.



RESOURCES FOR WOODLOT OWNERS—



It is a misconception that a healthy forest is always an untouched forest. The health of your forest may depend on active forest management. A forest management plan is the road map to successful long-term management of your forest. With your forester, you need to evaluate your property's physical attributes and your management activities and the steps you can take to safeguard the environment. This lets you find out where your starting point is. [Forest*A*Syst](#) can assist you in making the choices in balancing your desires for managing your forest.



[PROFILE YOUR LAND](#)



CENTER for
RURAL AFFAIRS

[WOMEN NON-OPERATOR LANDOWNERS](#)

More than 50 percent of farmland in the U.S. is owned or co-owned by women. Center for Rural Affairs has designed workshops and learning circles specifically for women non-operator farmland owners. The peer-based model of learning circles assist women landowners with connecting to resources that aren't reaching them, and women prefer the intimate women-only setting. Whether the farmland was recently inherited, owned for years in a trust, or the land is going through a transition, learning circles provide opportunities for women to connect with programs, resources, and one another.



As the first forestry consulting business to focus on women landowners, [Land and Ladies](#) offers three different ways for women to be engaged, and start taking their ownership by the reins OR to the next level. They equip women with the resources to tackle their landowner and forest management needs through their programs, membership and online resources.



They also offer a **FREE Online Beginner Landowner Course**, short course modules offering insight on hot topics like land objectives, planning, record keeping, and ways to make your land profitable.

[American Women: A guide to Women's History Resources at the Library of Congress](#)





American Farmland Trust Announces Nationwide Network of Service Providers to Help [Transitioning Land to the Next Generation](#)

The successful transfer of land to the next generation of farmers and ranchers will also require a transfer of knowledge and skills. More than 40 percent of American farmland is owned by seniors aged 65 and older, who are likely to retire in the next decade or so. Given the demographics, American Farmland Trust estimates that 371 million acres, or one-third of U.S. farmland, will likely transition to new ownership in the next 15 years.



[ORGANIC FARM FUNDING RESOURCES](#)

Get Help Expanding, Improving, or Starting Your Organic Farm.

Are you a beginning farmer? Are you an established farmer? Do you need assistance with certification costs or creating value-added products on your farm? Are you looking to transition your farm from conventional to organic practices? The following resources provide funding and other assistance. One of the biggest hurdles to transitioning land to organic or enhancing conservation on the farm is securing the funds to make it possible. Rodale's resources can help



National Association of
Conservation Districts

Conserving natural resources FOR OUR FUTURE



NACD's Guide to [Energy Conservation Opportunities in Agriculture](#) (PDF)

NACD's mission is to promote responsible management and conservation of natural resources on all lands by representing locally-led conservation districts and their associations through grassroots advocacy, education and partnerships.

Stressed out? Need some help resolving **Agricultural Issues?**



Farm Ranch Stress Assistance Network RI
FRSAN RI
Help Is On the Way!

RI DEM- Division of Agriculture and the Center for Mediation and Collaboration are partnering to launch a mental health and wellness program for farmers, commercial fishers, and workers in forestry-related industries.

Workers in the farm, fisheries, and forestry (FFF) communities work in isolating, dangerous, and economically uncertain occupations where depression, anxiety, and suicidal thoughts are not uncommon.

We are bringing together stakeholders across the state to address the root causes of stress, and provide foundational supports to our farm, fishery and forestry communities.

What Support Could Look Like

- Financial Planning
- Succession Planning
- Tax Assistance
- Employee Training and Retention Programs
- Land Access
- Child Care
- Substance Use Disorder Support
- Counseling

Steering Committee Members

RI-DEM Division of Agriculture, Center for Mediation and Collaboration RI, Commerce RI, Commercial Fisheries Center of RI, Farm Fresh RI, East Coast Shellfish Growers Association, Hope & Main, Northeast Organic Farmers Association-RI, RI Conservation Districts, RI Farm Bureau, RI Food Policy Council, RI Land Trust Council, RI Nursery and Landscape Association, Southside Community Land Trust, Tomaquag Museum, URI Cooperative Extension, Young Farmer Network of Southeastern New England

Need Help Now?

401.414.LINK(5465) BH Link
800-273-8255 National Suicide Prevention Hotline
1-800-327-6243 Farm Aid Hotline

For information/support please reach contact Laurel Witri laurel@cmcri.org.

For information/support **1-800-327-6243** or email Laurel Witri laurel@cmcri.org

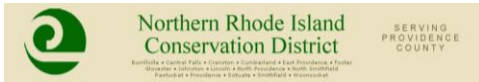


Rhode Island Association of Conservation Districts

Helping Rhode Island Conservation Districts Help Rhode Island

conserving
natural resources
for our future

2283 Hartford Avenue
Johnston, RI 02919
401-934-0840



Northern Rhode Island
Conservation District

SERVING
PROVIDENCE
COUNTY



Eastern Rhode Island Conservation District
— Serving Bristol & Newport Counties —

Barrington : Bristol : Jamestown : Little Compton : Middletown : Newport : Portsmouth : Tiverton : Warren



Southern Rhode Island Conservation District

The [Northern Rhode Island Conservation District \(NRICD\)](#) serves Providence County. The [Southern RI Conservation District \(SRICD\)](#) serves Kent and Washington Counties, and the [Eastern RI Conservation District \(ERICD\)](#) serves Newport and Bristol Counties.

The Newsletter of RI RC&D, The Rhode Island Resource & Development Area Council, Inc.

Disclaimer: Please Note

This newsletter's purpose is threefold. Our primary purpose is to keep our readers informed about opportunities and resources which may be available to our readership. Our second purpose is to keep our readership informed about news, events, products, opinions, and information which may directly affect our readership, either adversely or beneficially. Our third purpose is to present our readers with information that they may find enlightening or entertaining.

The opinions and political positions represented in the newsletter do not reflect the opinions or political positions of the Rhode Island Resource and Development Area Council, Inc.; nor does RI RC&D advocate or endorse any of the opinions, positions, or products mentioned in the newsletter *except where specifically stated*.

CONTACT RIFEP



Paul Dolan, RI RC&D Area Director
rircd2283@gmail.com

Jo-Anne Pacheco, Coordinator
WOW (Women Owning Woodlands) Project
Jo-Anne@rifarmenergy.org

Phone: 401-500-0399

RI RC&D Mailing Address:
2283 Hartford Avenue, Johnston, RI 02919

RI RC&D is an

