

NEWSLETTER

A PUBLICATION OF
RHODE ISLAND RESOURCE CONSERVATION & DEVELOPMENT
AREA COUNCIL, INC.

*The RIRC&D
Area Council, Inc.*



"HELPING PEOPLE HELP THE LAND SINCE 1973"

October 2022

In the months ahead our focus will change, but be assured that our primary purpose will remain: to keep our readers informed about opportunities and resources which may become available to them, and to keep them informed about news, events, products, opinions, and information relevant to the work of farmers and forest landowners. In short, RI RC&D will continue its mission to help YOU.

FOREST MANAGEMENT WORKSHOP



Saturday 8:00 am - 4:00 pm

October 15

A workshop for forest landowners and those
associated with managing forest properties



Canonicus Camp and Conference Center



54 EXETER ROAD, EXETER, RHODE ISLAND

8:00 - NOON: Basic Concepts in Forest and Wildlife Ecology, Components of a Management Plan

LUNCH 12:00 - 1:00: **\$20 Registration fee covers materials and lunch**

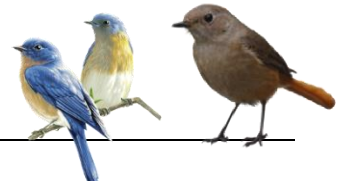
1:00 - 4:00: Guided Field Trip - **HELD RAIN OR SHINE! PLEASE DRESS APPROPRIATELY**

To register contact Paul Dolan, Area Director, RI Resource Conservation & Development

email: rircd2283@gmail.com or phone: 401-500-0399

Those who have attended previous Coverts workshops are encouraged to attend this workshop to ask questions and to get more in-depth information about forest management that will benefit wildlife.

Please plan to join us!



THE RHODE ISLAND RENEWABLE ENERGY TECHNICAL ASSISTANCE PROGRAM IS READY TO HELP YOU SAVE!



The cost for renewable energy systems such as photovoltaic solar panels and wind microturbines has come down significantly in recent years. And now, there are many new ways to deploy solar and wind projects on farms and rural small businesses. Today's solar is a whole lot more than some panels on your roof! But, with all these changes, you may not feel you know enough about these systems to decide whether any of them might be right for your farm or business. Fortunately, the Rhode Island Renewable Energy Technical Assistance Program can help.

This program is ready to help you evaluate the potential for solar or other types of renewable energy system on your site *at no cost to you*. And your participation in this program takes only four hours of your time spread over a 10-week period.

However, you MUST APPLY to determine your eligibility!

Only 26 to 30 Eligible farms and businesses will be chosen to participate in this program, and acceptance is on a first-come, first-served basis.

To APPLY

Contact Margaret Lee of EnSave.com

MargaretL@ensave.com

800-732-1399

Tell Margaret you want to apply for the

Rhode Island Renewable Energy Technical Assistance Program

This program is being funded by a USDA Rural Development grant with the goal of assisting local farmers and small rural business owners explore their operation's potential to benefit from renewable energy. RIRC&D has partnered with EnSave to offer this program to farms and businesses throughout Rhode Island. If you don't already know EnSave, they are one of the nation's leading providers of agricultural energy systems design and analysis, and they work with farms across the country to reduce energy costs for farmers and rural small businesses and technical feasibility of implementation of those systems for their farm or rural small business.



Orion magazine invites readers into a community of caring for the planet. Through writing and art that explore the connection between nature and culture, Orion inspires new thinking about how humanity might live on Earth justly, sustainably, and joyously.

The Brutal Legacy of the Longleaf Pine



The carefully-tended longleaf pine forests of North America were plundered by European colonizers. They're still recovering...

"We tend to accept that ownership of the land means we also own everything connected to it--all of the creeks and soil and trees and plants--but this is a relatively modern idea, one that evolved from the violence of colonization and the forceful transformation of land into wealth."

As she traces the history and significance of the longleaf pine, **Lacy M. Johnson** reveals fundamental questions about how care for broader ecosystems is to be undertaken when so much land is held in private ownership in service of individual wealth-building...[READ MORE](#)

The Future Logs of Unit 72

Thoughts from an imperiled old-growth forest



Former poet laureate of Mississippi **Beth Ann Fennelly** adds her voice to the chorus of artists and conservationists calling on the U.S. Forest Service to reverse its decision to proceed with the 95,000 acre Black Ram logging project planned in the old-growth forest in the Yaak Valley of Montana.

This forest is the rarest of forests—primary—never logged, and never burned, because it sits on a water table, which means that forest fires never licked it. Some of its old larch have lived there for eight hundred years. When these larch were saplings, Marco Polo visited China. King John signed the Magna Carta. Genghis Khan founded the Mongol Empire. Because the U.S. Forest Service refers to the parcel as “Unit 72,” it will be easier to clear-cut...[READ MORE](#)

Rhode Island Forest Conservators Organization

Helping to Safeguard Rhode Island's Woodlands



Rhode Island Forest Conservators Organization (RIFCO) is a non-profit organization dedicated to the protection and wise use of Rhode Island's woodland resources.

To receive the [RIFCO](#) monthly e-newsletter

"[The Forest Conservationist](#)," visit our [Contact](#) page and submit a request online.
Or [Join RIFCO](#) and automatically receive a subscription as a [RIFCO](#) member.

RESOURCES FOR WOODLOT OWNERS— USDA New England New York Forestry Initiative



EQIP Forestry Initiative Information

The Environmental Quality Incentives Program (EQIP) is a voluntary program for people who want to develop and improve wildlife habitat primarily on private land. Applicants with forestland or in fields with 25 percent more woody cover (aerial canopy cover) of tree species and who wish to install practices that will protect or enhance fish and wildlife habitat should apply to this initiative.



The Overstory is the tri-annual publication of forest-centric news produced by The Forest School at the Yale School of the Environment. *"We're excited to share with you the many ways our community is advancing the field of forestry in all its many forms. This newsletter highlights some of the research, field work, activities, and initiatives our students, faculty, alums, and centers & programs have been involved in over the last months."*

American Forest Foundation Newsletter

Sign up and receive updates from the **AFF** and/or its signature programs: the American Tree Farm System (ATFS) and My Land Plan

Purdue University Extension provides many free publications on Stewardship for Landowners.

Go to this link FREE downloadable publications and type "woodland" in the search box to get a list of all the free publications.



RIWP: Your Online Resource for RI Forest Information



RI DEM Forest Stewardship Program



Forest Stewardship: Earning Income from Your Forestland



How About Those Woodlots; Can We Make Any Money from Them?



Conserving natural resources FOR OUR FUTURE



NACD's Guide to [Energy Conservation Opportunities in Agriculture \(PDF\)](#)

[NACD](#)'s mission is to promote responsible management and conservation of natural resources on all lands by representing locally-led conservation districts and their associations through grassroots advocacy, education and partnerships.

FUNDING OPPORTUNITIES AND INCENTIVES **2022**

Rodale [Organic Farm Funding](#)

Get help expanding, improving, or starting your organic farm, **PLUS** Resources for New Farmers! If you're a young or beginning farmer looking for help finding and buying land, check out the [National Young Farmers Coalition](#) and our local chapter [Young Farmer Network of Southeastern New England](#)!

American Farmland Trust Grant Programs



AFT provides direct support to farmers across the country to strengthen farm resilience, enhance farm viability, and improve access to land.

Launched in 2020, the [New England Farmer Microgrants Program](#) is a small grants program that provides direct financial support up to \$5,000 to farmers across New England.

Brighter Future Fund

The **2022 Brighter Future Fund** aims to provide **grants of up to \$5,000 directly to 150 farmers**. Thanks to the generosity of a lead partner, 100% of all funds raised will go directly to farmers and **all funds will be directed to farmers who are BIPOC, LGBTQ+, and/or women**.

If you are a farmer or service provider with questions about our **New England Programs**, please reach out to us: NewEngland@farmland.org, NE Jamie Potton, Program Manager.

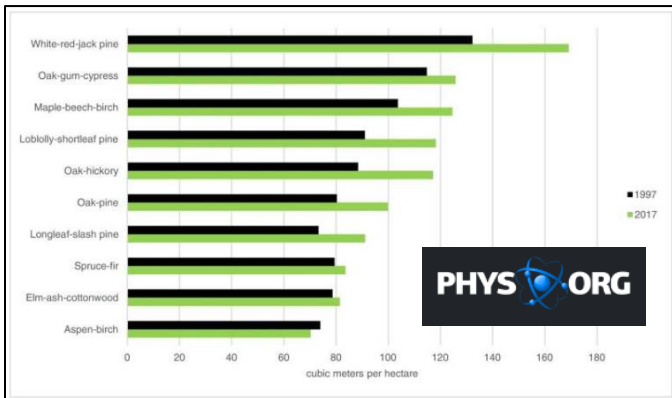


Need help finding the right information or resource to help save farmland? [Ask an AFT Expert](#) AFT information specialists provide technical assistance free of charge. Whether you are a landowner, beginning farmer, concerned citizen or policymaker, AFT is there to help. Contact AFT toll-free number (800) 370-4879 or submit a question using the [form on AFT web page](#).



American Farmland Trust Announces Nationwide Network of Service Providers to Help Transitioning Land to the Next Generation

The successful transfer of land to the next generation of farmers and ranchers will also require a transfer of knowledge and skills. More than 40 percent of American farmland is owned by seniors aged 65 and older, who are likely to retire in the next decade or so. Given the demographics, American Farmland Trust estimates that 371 million acres, or one-third of U.S. farmland, will likely transition to new ownership in the next 15 years



Climate Change Is Turning Trees Into Gluttons

"Forests are taking carbon out of the atmosphere at a rate of about 13% of our gross emissions," said Brent Sohngen, co-author of the study and professor of environmental and resource economics at The Ohio State University. "While we're putting billions of tons of carbon dioxide into the atmosphere, we're actually taking much of it out just by letting our forests grow."

[READ MORE](#)



U.S. Ratifies Global Treaty Curbing Climate Super-Pollutants

The treaty— known as the [Kigali Amendment](#) to the 1987 Montreal Protocol— compels countries to phase out the use of the potent hydrofluorocarbons, or HFCs, which are hundreds to thousands of times as powerful as carbon dioxide in speeding up climate change ... [READ MORE](#)



A Breakthrough Discovery In Carbon Capture

A team of researchers led by Meenesh Singh at University of Illinois Chicago has discovered a way to convert 100% of carbon dioxide captured from industrial exhaust into ethylene, a key building block for plastic products... According to Singh, his team's approach surpasses the net-zero carbon goal... "It's a net negative," he said. "For every 1 ton of ethylene produced, you're taking 6 tons of CO₂ from point sources that otherwise would be released to the atmosphere." [READ MORE](#)

Worldwide Water Crisis

TOO MUCH WATER—



[Sea Level Rise Is So Much More Than Melting Ice](#)

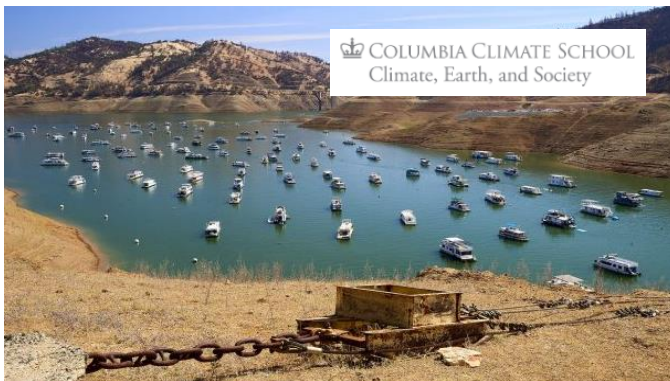
Scientists say it's no secret San Francisco Bay is rising, along with all of the earth's oceans. The reason --- global warming. This rise in sea level will affect everyone who lives, works, or plays near the bay. QUEST asks how high will the Bay rise and when? And what steps can communities take to plan for it? [WATCH](#)



[Floods in Pakistan](#)

August 31, 2022. REUTERS— Torrential rains and flooding have submerged a third of Pakistan and killed more than 1,191 people, including 399 children as the United Nations appealed for aid on Tuesday for what it described as an "unprecedented climate catastrophe." In Mehar, Pakistan, a group of people travel in a boat as it passes submerged houses amid flood waters, following rains and floods during the monsoon season... [READ MORE](#)

NOT ENOUGH WATER—



[A 1,000 Year Drought is Hitting the West. Could Desalination Be a Solution?](#)

There have been unprecedented water cuts to the Colorado River—which provides water to seven states—and shutdowns of hydroelectric power plants. The aquifers of towns that depend on well water are depleted, forcing residents to truck in water. Normally, agriculture consumes over 90 percent of the water in many western states, but the drought has caused yields to plummet; some farmers have reduced their acreage... [READ MORE](#)



[Water Cuts in the West Underscore Severity of Climate Crisis](#)

08/16/2022—The federal government on Tuesday announced a second round of water restrictions to states that depend on the Colorado River Basin. The move comes as the American West faces unprecedented challenges to preserve water that continues to recede rapidly. Jennifer Pitt, Colorado River program director for the National Audubon Society, joins Stephanie Sy to discuss... [READ MORE](#)



[Droughts and Heatwaves: Red Alert for Half of Europe](#)

Today, [also the European Commission's Joint Research Centre confirmed that](#) almost half of Europe is highly exposed to heatwaves and droughts and it is a critical moment for the entire continent.

In Central and Eastern Europe, Hungary's [National Meteorological Service has raised the alarm](#), noting a continuum from the droughts of 2021... [READ MORE](#)

Protecting and Restoring Aquifers



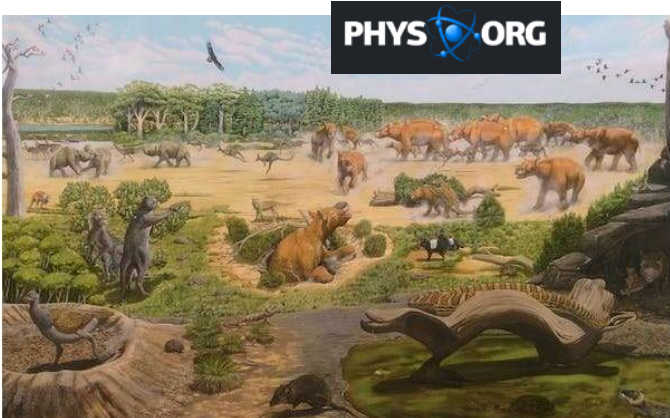
[Recharged: Improving Freshwater Supply and Quality](#)

University of Santa Cruz hydrogeologist Andrew Fisher leads a team of researchers looking for better ways to capture runoff and use it to not only increase groundwater quantity, but also quality. They are using the Pajaro Valley on the central California coast, a productive and valuable agriculture area, as their practical laboratory, working with farmers and water managers to recharge groundwater.



[Hill Country Groundwater Recharge](#)

Bryan Hummel shows us his groundwater recharge project in the Red Bluff Creek area of the Texas Hill Country. Berms and swales on contour is a great way to restore degraded landscapes, increase biodiversity, mitigate storm water runoff, and of course, turn a storm water liability into a groundwater asset on your land. Giving the storm water time and space to infiltrate can drastically improve land health, and create seeps and springs on your land!



[Study finds Australian caves are up to 500,000 years older than we thought](#)

There's heated debate about whether the extinction of Australia's megafauna was the result of humans or the climate... Australia's richness of plant and animal species faces an uncertain future, due to climate change and other human impacts. Studying important sites such as the Naracoorte Caves helps us understand not just how climate change influenced biodiversity in the past, but what might happen in future... [READ MORE](#)

Stressed out? Need some help resolving **Agricultural Issues?**



Farm Ranch Stress Assistance Network RI
FRSAN RI

Help Is On the Way!

RI DEM- Division of Agriculture and the Center for Mediation and Collaboration are partnering to launch a mental health and wellness program for farmers, commercial fishers, and workers in forestry-related industries.

Workers in the farm, fisheries, and forestry (FFF) communities work in isolating, dangerous, and economically uncertain occupations where depression, anxiety, and suicidal thoughts are not uncommon.

We are bringing together stakeholders across the state to address the root causes of stress, and provide foundational supports to our farm, fishery and forestry communities.

What Support Could Look Like

- Financial Planning
- Succession Planning
- Tax Assistance
- Employee Training and Retention Programs
- Land Access
- Child Care
- Substance Use Disorder Support
- Counseling

Steering Committee Members

RI-DEM Division of Agriculture, Center for Mediation and Collaboration RI, Commerce RI, Commercial Fisheries Center of RI, Farm Fresh RI, East Coast Shellfish Growers Association, Hope & Main, Northeast Organic Farmers Association-RI, RI Conservation Districts, RI Farm Bureau, RI Food Policy Council, RI Land Trust Council, RI Nursery and Landscape Association, Southside Community Land Trust, Tomaquag Museum, URI Cooperative Extension, Young Farmer Network of Southeastern New England

Need Help Now?

401.414.LINK(5465) BH Link

800-273-8255 National Suicide Prevention Hotline

1-800-327-6243 Farm Aid Hotline

For information/support please reach contact Laurel Witri laurel@cmcri.org.

For information/support **1-800-327-6243** or email Laurel Witri laurel@cmcri.org

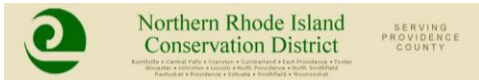


Rhode Island Association of Conservation Districts

Helping Rhode Island Conservation Districts Help Rhode Island

conserving
natural resources
for our future

2283 Hartford Avenue
Johnston, RI 02919
401-934-0840



The [Northern Rhode Island Conservation District \(NRICD\)](#) serves Providence County. The [Southern RI Conservation District \(SRICD\)](#) serves Kent and Washington Counties, and the [Eastern RI Conservation District \(ERICD\)](#) serves Newport and Bristol Counties.

The Newsletter of RIRC&D, The Rhode Island Resource & Development Area Council, Inc.

Disclaimer: Please Note

This newsletter's purpose is threefold. Our primary purpose is to keep our readers informed about opportunities and resources which may be available to our readership. Our second purpose is to keep our readership informed about news, events, products, opinions, and information which may directly affect our readership, either adversely or beneficially. Our third purpose is to present our readers with information that they may find enlightening or entertaining.

The opinions and political positions represented in the newsletter do not reflect the opinions or political positions of either the Rhode Island Resource and Development Area Council, Inc., or the Rhode Island Farm Energy Program; nor does either RIRC&D or RIFEP advocate or endorse any of the opinions, positions, or products mentioned in the newsletter *except where specifically stated*.

CONTACT RIFEP



Paul Dolan, RI RC&D Area Director
rircd2283@gmail.com

Jo-Anne Pacheco, Coordinator
WOW (Women Owning Woodlands) Project
Jo-Anne@rifarmenergy.org

Phone: 401-500-0399

RI RC&D Mailing Address:
2283 Hartford Avenue, Johnston, RI 02919

Web Site: <http://rircd.org>

RI RC&D is an

