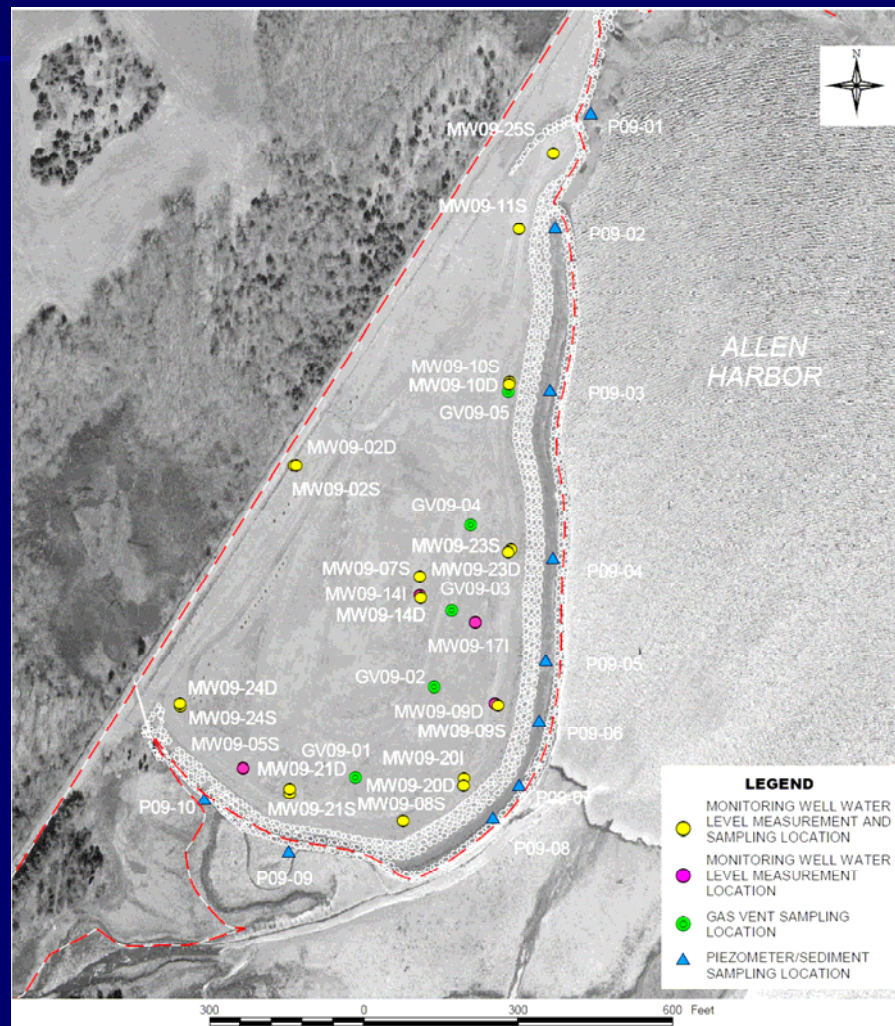


Former NCBC Davisville Long-Term Monitoring

- Site 09 – Allen Harbor Landfill
- EBS 21 – Former AST DC-133
- Site 07 – Calf Pasture Point
- Site 03 – Construction Equipment Department

Site 09 – Allen Harbor Landfill



Allen Harbor Landfill Long-Term Monitoring Program (Current)

- Quarterly monitoring since December 2001
- 18 Monitoring Events performed to date
- Groundwater Sampling
 - 18 monitoring wells, 10 piezometers
 - VOCs, SVOCs, PAHs, PCBs, pesticides, metals
- Sediment Sampling
 - 10 sampling locations
 - VOCs, SVOCs, PAHs, PCBs, pesticides, metals
- Landfill Gas Sampling
 - 5 sampling locations
 - VOCs, SVOCs, total hydrocarbons, methane
- Annual Settlement Survey
- Semi-Annual Landfill Inspections

Allen Harbor Landfill Annual Report

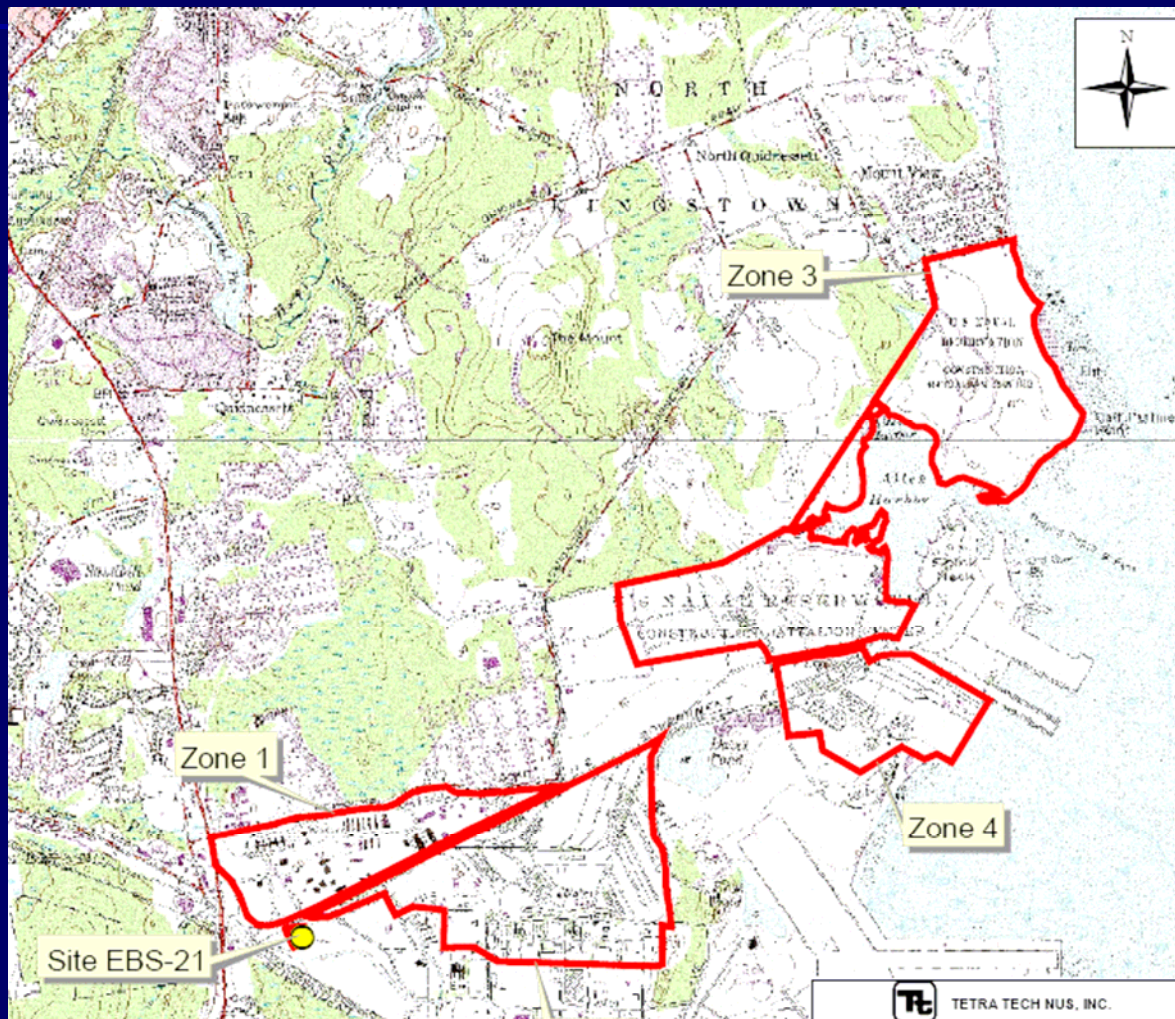
- Evaluation of data collected during first 15 monitoring events
- Undergoing regulatory review
- Data summary and trend analyses
- Optimization of long-term monitoring program using decision logic contained in LTM QAPP
 - Develop “focused list” of monitoring points
 - Add sampling points where gaps exist

Allen Harbor Landfill

Protectiveness of Remedy

- Multimedia cap
 - Prevents direct contact with surface soil
 - Protect terrestrial animals from contact with soils
- Institutional controls
 - Prevent contact with soils
 - Prevent ingestion of shellfish
 - Prevent use of on-site groundwater

EBS 21 – Former Aboveground Storage Tank DC-133



EBS 21

Long-Term Monitoring Program

- Objective: to verify natural attenuation of petroleum compounds in groundwater resulting from release
- Quarterly monitoring since September 2002
- 15 Monitoring Events performed to date
- Groundwater Sampling
 - 12 monitoring wells
 - VOCs and SVOCs only
- Annual Report covers first 12 quarterly events
- Similar methodology as Allen Harbor Landfill
- Comments received from RIDEM

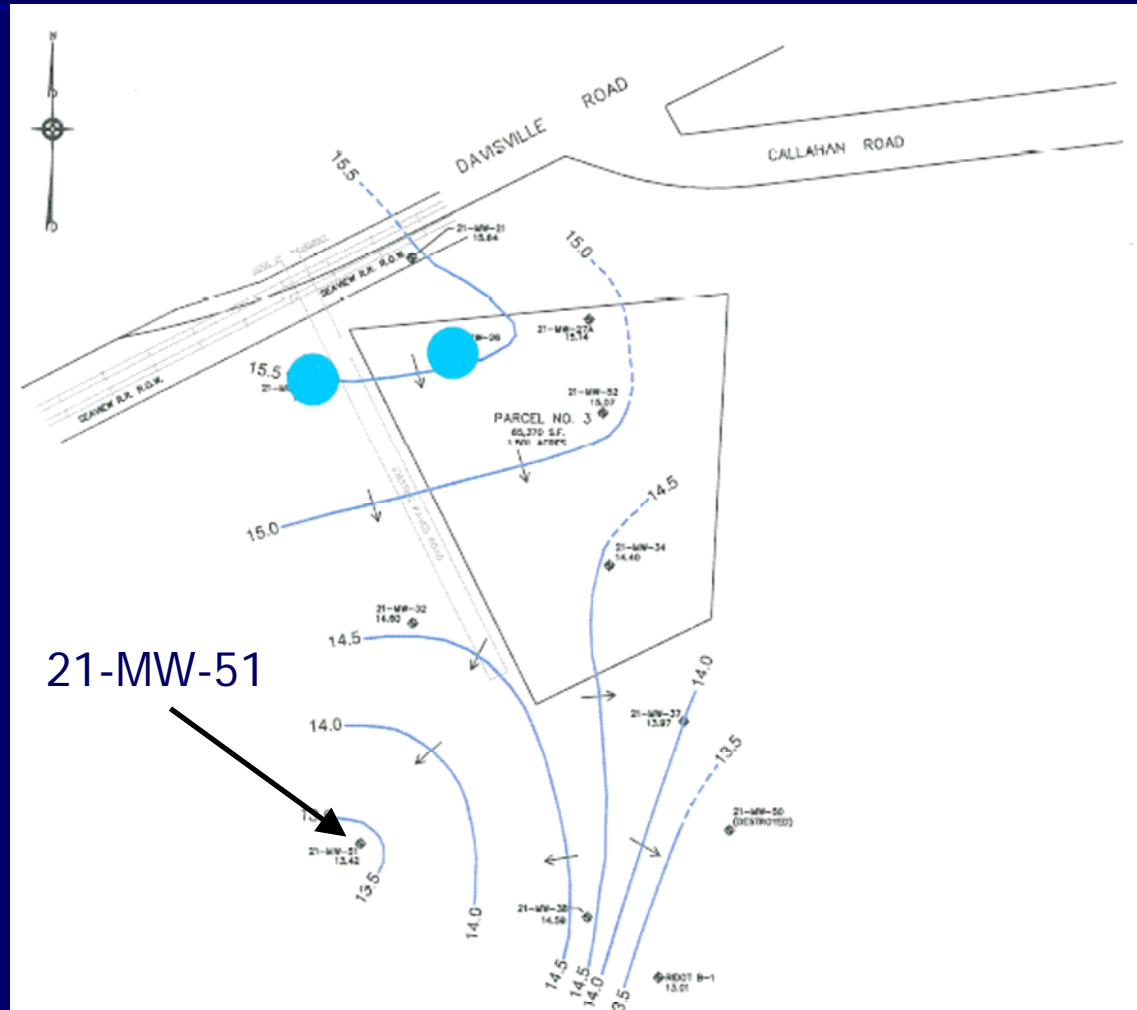
EBS 21

Evaluation of Data

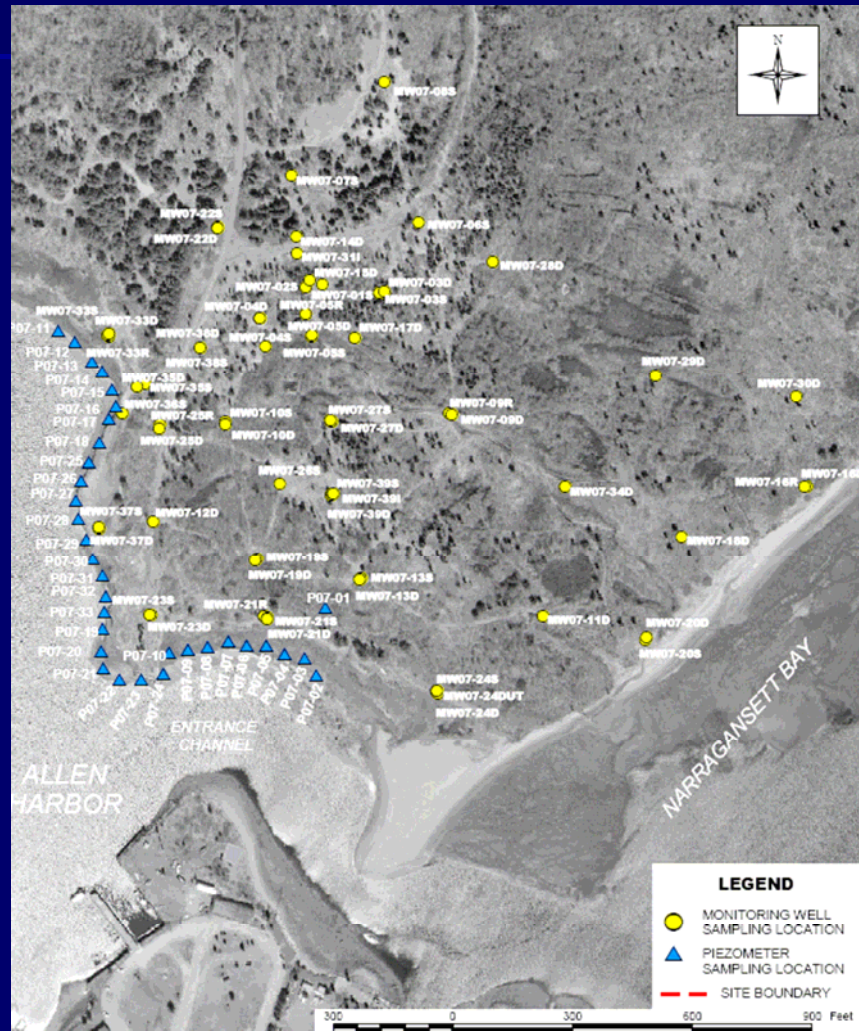
- One site-related chemical (naphthalene) currently exceeds PALs
- PAL for naphthalene = 20 ppm
- 2 wells impacted: 21-MW-24 and 21-MW-26
- Vinyl chloride in 21-MW-51 also exceeds PAL
- Historical sampling data reveals no evidence of upward or downward trends

EBS 21

21-MW-24 & 21-MW-26 Location



Site 07 – Calf Pasture Point



Calf Pasture Point Long-Term Monitoring Program

- Sampling every 9 months
- Groundwater Samples
 - Monitoring wells
 - Piezometers
- Sediment Sampling

Site 07 – Calf Pasture Point Shoreline Risk Evaluation

- 2004 – increase in VOC concentrations in piezometer samples
- Navy takes action to collect bi-monthly piezometer and surface water samples
- Shoreline piezometer, sediment, surface water, and biota samples will be used to evaluate human health risks; determine need for continued prohibition of wading

Site 07 – Calf Pasture Point

Conceptual Site Model

- Update Conceptual Site Model Report from 2004 using 6 rounds of data
- Evaluate source area investigation strategies
- Optimize remedy for Site 07

Site 03 – Construction Equipment Department

- Co-mingled with groundwater contamination from PR-58 Nike Site (FUDS)
- Navy performing interim groundwater monitoring annually at Site 03
- Navy and Army will coordinate next sampling round

Former NCBC Davisville



Thank You